

## Meet-by-Meet (Placements), Season and Career Statistics



### Parker Beattie

Career Statistics			
Year	Meets	AA	Total Points

#### Meet-by-Meet in 2012

Date	Place	Vault	Bars	Beam	Floor	A-A
1/8	WVU	--	--	--	--	--
1/15	WVU	--	--	--	--	--
1/21	Bowling Green	--	--	--	--	--
1/29	WVU	--	--	--	--	--
2/3	Michigan	--	--	--	--	--
2/12	WVU	--	--	--	--	--
2/18	Maryland	--	--	--	--	--
2/25	New Hampshire	--	--	--	--	--
3/3	Denver	--	--	--	--	--
3/10	WVU	--	--	--	--	--
3/16	LSU	--	--	--	--	--
3/24	EAGL	--	--	--	--	--
4/7	Regionals	--	--	--	--	--
RQS						
Average						
2012 High						
Career High						



### Makenzie Bristol

Career Statistics			
Year	Meets	AA	Total Points
2012	13	0	126.7
2011	8	0	85.725
Totals	21	0	212.425

#### Meet-by-Meet in 2012

Date	Place	Vault	Bars	Beam	Floor	A-A
1/8	WVU	--	--	--	9.8 (9)	--
1/15	WVU	--	--	--	9.725 (6t)	--
1/21	Bowling Green	--	--	--	9.8 (4t)	--
1/29	WVU	--	--	--	9.775 (4t)	--
2/3	Michigan	--	--	--	9.8 (3t)	--
2/12	WVU	--	--	--	9.4 (20)	--
2/18	Maryland	--	--	--	9.725 (12t)	--
2/25	New Hampshire	--	--	--	9.775 (5t)	--
3/3	Denver	--	--	--	9.775 (10t)	--
3/10	WVU	--	--	--	9.85 (4)	--
3/16	LSU	--	--	--	9.675 (12)	--
3/24	EAGL	--	--	--	9.825 (24t)	--
4/7	Regionals	--	--	--	9.775 (22t)	--
RQS						
Average						
2012 High						
Career High						



### Reilly Beattie

Career Statistics			
Year	Meets	AA	Total Points

#### Meet-by-Meet in 2012

Date	Place	Vault	Bars	Beam	Floor	A-A
1/8	WVU	--	--	--	--	--
1/15	WVU	--	--	--	--	--
1/21	Bowling Green	--	--	--	--	--
1/29	WVU	--	--	--	--	--
2/3	Michigan	--	--	--	--	--
2/12	WVU	--	--	--	--	--
2/18	Maryland	--	--	--	--	--
2/25	New Hampshire	--	--	--	--	--
3/3	Denver	--	--	--	--	--
3/10	WVU	--	--	--	--	--
3/16	LSU	--	--	--	--	--
3/24	EAGL	--	--	--	--	--
4/7	Regionals	--	--	--	--	--
RQS						
Average						
2012 High						
Career High						



### Amanda Carpenter

Career Statistics			
Year	Meets	AA	Total Points
2012	12	0	115.775

#### Meet-by-Meet in 2012

Date	Place	Vault	Bars	Beam	Floor	A-A
1/8	WVU	--	--	9.8 (3t)	--	--
1/15	WVU	--	--	9.55 (9t)	--	--
1/21	Bowling Green	--	--	9.675 (3)	--	--
1/29	WVU	--	--	9.75 (5t)	--	--
2/3	Michigan	--	--	9.75 (2t)	--	--
2/12	WVU	--	--	9.775 (9t)	--	--
2/18	Maryland	--	--	9.275 (19)	--	--
2/25	New Hampshire	--	--	9.25 (10t)	--	--
3/3	Denver	--	--	--	--	--
3/10	WVU	--	--	9.725 (6t)	--	--
3/16	LSU	--	--	9.775 (7t)	--	--
3/24	EAGL	--	--	9.7 (21t)	--	--
4/7	Regionals	--	--	9.75 (18t)	--	--
RQS						
Average						
2012 High						
Career High						

## Meet-by-Meet (Placements), Season and Career Statistics



### Beth Deal

Career Statistics			
Year	Meets	AA	Total Points
2012	8	0	76.55

#### Meet-by-Meet in 2012

Date	Place	Vault	Bars	Beam	Floor	A-A
1/8	WVU	--	--	9.825 (2)	--	--
1/15	WVU	--	--	9.725 (3)	--	--
1/21	Bowling Green	--	--	9.6 (5t)	--	--
1/29	WVU	--	--	--	--	--
2/3	Michigan	--	--	--	--	--
2/12	WVU	--	--	--	--	--
2/18	Maryland	--	--	--	--	--
2/25	New Hampshire	--	--	--	--	--
3/3	Denver	--	--	9.725 (5t)	--	--
3/10	WVU	--	--	9.025 (12)	--	--
3/16	LSU	--	--	9.525 (11)	--	--
3/24	EAGL	--	--	9.9 (1)	--	--
4/7	Regionals	--	--	9.225 (39)	--	--
RQS		--	--	9.68	--	--
Average		--	--	9.569	--	--
2012 High		--	--	9.9	--	--
Career High		--	--	9.9	--	--



### Dayah Haley

Career Statistics			
Year	Meets	AA	Total Points
2012	12	0	221.125

#### Meet-by-Meet in 2012

Date	Place	Vault	Bars	Beam	Floor	A-A
1/8	WVU	9.775 (6t)	--	9.0 (17)	8.625 (18)	--
1/15	WVU	9.775 (4t)	--	--	--	--
1/21	Bowling Green	9.625 (8t)	--	--	--	--
1/29	WVU	9.775 (5t)	9.575 (10)	--	--	--
2/3	Michigan	9.725 (9t)	9.625 (9)	--	9.65 (9t)	--
2/12	WVU	9.75 (8t)	9.7 (20)	--	--	--
2/18	Maryland	9.5 (16)	9.775 (8t)	--	--	--
2/25	New Hampshire	--	--	--	--	--
3/3	Denver	9.725 (12t)	9.475 (20)	--	--	--
3/10	WVU	9.725 (9)	9.7 (9)	--	--	--
3/16	LSU	--	9.675 (10)	--	--	--
3/24	EAGL	9.7 (35t)	9.8 (10t)	--	--	--
4/7	Regionals	9.8 (24t)	9.65 (38t)	--	--	--
RQS		9.74	9.695	--	--	--
Average		9.716	9.664	9.0	9.138	--
2012 High		9.8	9.8	9.0	9.65	--
Career High		9.8	9.8	9.0	9.65	--



### Chelsea Goldschrafe

Career Statistics			
Year	Meets	AA	Total Points
2012	13	3	396.525
2011	13	0	348.3
2010	12	0	210.425
Totals	37	3	955.25

#### Meet-by-Meet in 2012

Date	Place	Vault	Bars	Beam	Floor	A-A
1/8	WVU	--	9.675 (14)	9.55 (14t)	9.725 (13)	--
1/15	WVU	--	8.575 (11)	9.575 (7t)	9.725 (6t)	--
1/21	Bowling Green	9.6 (11)	--	9.525 (9)	9.725 (11)	--
1/29	WVU	9.825 (3)	--	9.8 (3t)	9.825 (2t)	--
2/3	Michigan	9.75 (7t)	9.725 (7)	9.15 (11t)	9.75 (8)	38.375 (5)
2/12	WVU	9.85 (2)	--	--	9.675 (9t)	--
2/18	Maryland	9.65 (8t)	--	9.75 (4t)	8.95 (24)	--
2/25	New Hampshire	9.85 (2t)	9.675 (9)	9.775 (4t)	9.75 (8t)	39.05 (2)
3/3	Denver	9.825 (5)	--	9.65 (13t)	9.7 (18)	--
3/10	WVU	9.8 (5t)	--	9.675 (8t)	9.8 (5)	--
3/16	LSU	9.75 (7)	9.65 (11)	9.775 (7t)	9.775 (10t)	38.95 (6)
3/24	EAGL	9.85 (7t)	--	9.8 (4t)	9.775 (33t)	--
4/7	Regionals	9.85 (10t)	--	9.675 (28t)	9.75 (24t)	--
RQS		9.83	--	9.755	9.77	--
Average		9.782	9.46	9.642	9.687	38.792
2012 High		9.85	9.725	9.8	9.825	39.05
Career High		9.85	9.725	9.85	9.85	39.05



### Jamie Judge

Career Statistics			
Year	Meets	AA	Total Points
2012	12	0	221.125

#### Meet-by-Meet in 2012

Date	Place	Vault	Bars	Beam	Floor	A-A
1/8	WVU	--	--	--	--	--
1/15	WVU	--	--	--	--	--
1/21	Bowling Green	--	--	--	--	--
1/29	WVU	--	--	--	--	--
2/3	Michigan	--	--	--	--	--
2/12	WVU	--	--	--	--	--
2/18	Maryland	--	--	--	--	--
2/25	New Hampshire	--	--	--	--	--
3/3	Denver	--	--	--	--	--
3/10	WVU	--	--	--	--	--
3/16	LSU	--	--	--	--	--
3/24	EAGL	--	--	--	--	--
4/7	Regionals	--	--	--	--	--
RQS		--	--	--	--	--
Average		--	--	--	--	--
2012 High		--	--	--	--	--
Career High		--	--	--	--	--

## Meet-by-Meet (Placements), Season and Career Statistics



### Tina Maloney

Career Statistics				
Year	Meets	AA	Total Points	
2012	13	9	452.375	
2011	13	1	328.5	
2010	13	0	291.375	
2009	12	0	155.65	
<b>Totals</b>	<b>51</b>	<b>10</b>	<b>1,227.9</b>	

#### Meet-by-Meet in 2012

Date	Place	Vault	Bars	Beam	Floor	A-A
1/8	WVU	9.7 (10t)	9.65 (15t)	9.625 (13)	9.875 (1)	38.85 (4)
1/15	WVU	9.7 (7)	9.525 (6)	9.575 (7t)	9.775 (3t)	38.575 (3)
1/21	Bowling Green	9.775 (3t)	9.675 (4t)	9.6 (5t)	9.575 (12)	38.625 (3)
1/29	WVU	9.75 (6t)	9.5 (12t)	9.75 (5t)	9.675 (8)	38.675 (2)
2/3	Michigan	9.725 (9t)	9.6 (10)	9.525 (8)	9.65 (9t)	38.5 (4)
2/12	WVU	9.9 (1)	9.75 (14t)	9.75 (12t)	9.075 (22t)	38.475 (5)
2/18	Maryland	9.575 (12t)	9.75 (10t)	9.675 (10t)	9.725 (12t)	38.725 (4)
2/25	New Hampshire	9.875 (1)	9.6 (11)	9.1 (12)	9.775 (5t)	38.35 (4)
3/3	Denver	9.75 (11)	9.0 (22)	8.9 (22)	9.65 (19)	37.3 (9)
3/10	WVU	9.75 (8)	9.675 (10)	--	9.725 (9)	--
3/16	LSU	9.625 (12)	--	--	9.825 (5)	--
3/24	EAGL	9.85 (7t)	9.5 (44)	--	9.075 (47)	--
4/7	Regionals	9.775 (32t)	9.7 (36t)	--	9.8 (17t)	--
RQS		9.8	9.67	9.635		38.62
Average		9.75	9.577	9.5	9.631	38.453
2012 High		9.9	9.75	9.75	9.875	38.85
Career High		9.9	9.75	9.75	9.875	38.85



### Alaska Richardson

Career Statistics				
Year	Meets	AA	Total Points	
2012	13	0	254.25	
2011	11	0	145.125	
2010	10	0	97.025	
<b>Totals</b>	<b>34</b>	<b>0</b>	<b>496.4</b>	

#### Meet-by-Meet in 2012

Date	Place	Vault	Bars	Beam	Floor	A-A
1/8	WVU	8.95 (18)	--	--	9.825 (5t)	--
1/15	WVU	9.875 (1t)	--	--	9.775 (3t)	--
1/21	Bowling Green	9.725 (6)	--	--	9.85 (1)	--
1/29	WVU	9.875 (1t)	--	--	9.875 (1)	--
2/3	Michigan	9.775 (5t)	--	--	9.8 (3t)	--
2/12	WVU	9.8 (4t)	--	--	9.725 (4t)	--
2/18	Maryland	9.65 (8t)	--	--	9.775 (7t)	--
2/25	New Hampshire	9.85 (2t)	--	--	9.825 (2)	--
3/3	Denver	9.8 (6t)	--	--	9.875 (1t)	--
3/10	WVU	9.875 (2t)	--	--	9.9 (1t)	--
3/16	LSU	9.675 (11)	--	--	9.85 (3t)	--
3/24	EAGL	9.85 (7t)	--	--	9.8 (29t)	--
4/7	Regionals	9.875 (8t)	--	--	9.8 (17t)	--
RQS		9.85	--	--	9.855	--
Average		9.737	--	--	9.821	--
2012 High		9.875	--	--	9.9	--
Career High		9.9	--	--	9.9	--



### Kaylyn Millick

Career Statistics				
Year	Meets	AA	Total Points	
2012	13	8	428.4	
2011	13	5	402.8	
<b>Totals</b>	<b>26</b>	<b>13</b>	<b>831.2</b>	

#### Meet-by-Meet in 2012

Date	Place	Vault	Bars	Beam	Floor	A-A
1/8	WVU	--	9.775 (4t)	--	--	--
1/15	WVU	--	9.575 (5)	9.75 (2)	9.8 (1)	--
1/21	Bowling Green	9.625 (8t)	9.525 (7)	--	9.8 (4t)	--
1/29	WVU	--	9.775 (3)	9.85 (1t)	9.825 (2)	--
2/3	Michigan	--	9.775 (4)	9.725 (4)	--	--
2/12	WVU	9.725 (13t)	9.85 (4t)	9.825 (4t)	9.6 (14)	39.0 (3)
2/18	Maryland	9.575 (12t)	9.9 (1)	9.675 (10t)	9.825 (3t)	38.975 (2)
2/25	New Hampshire	9.8 (6t)	9.85 (3)	9.325 (9)	9.8 (3t)	38.775 (3)
3/3	Denver	9.625 (21t)	9.625 (17t)	9.675 (11t)	9.825 (6t)	38.75 (8)
3/10	WVU	9.625 (11)	9.85 (2t)	9.825 (5)	9.875 (3)	39.175 (3)
3/16	LSU	9.725 (8t)	9.775 (6t)	9.8 (4t)	9.8 (6t)	39.1 (4)
3/24	EAGL	9.8 (14t)	9.825 (7t)	9.075 (46)	9.9 (2t)	38.6 (10)
4/7	Regionals	9.825 (16t)	9.85 (5t)	9.8 (12t)	9.75 (24t)	39.225 (10)
RQS		9.703	9.83	9.77	9.83	38.92
Average		9.688	9.765	9.666	9.8	38.95
2012 High		9.825	9.9	9.85	9.9	39.225
Career High		9.825	9.9	9.85	9.9	39.225



### Nicole Roach

Career Statistics				
Year	Meets	AA	Total Points	
2012	12	0	154.45	
2011	10	0	162.975	
2010	13	0	250.45	
2009	11	0	106.975	
<b>Totals</b>	<b>46</b>	<b>0</b>	<b>674.85</b>	

#### Meet-by-Meet in 2012

Date	Place	Vault	Bars	Beam	Floor	A-A
1/8	WVU	--	9.725 (9t)	--	--	--
1/15	WVU	--	9.6 (4)	--	--	--
1/21	Bowling Green	--	9.75 (3)	9.45 (10t)	--	--
1/29	WVU	--	9.825 (1)	9.85 (1t)	--	--
2/3	Michigan	--	9.675 (8)	9.15 (11t)	--	--
2/12	WVU	--	9.675 (22)	9.075 (22)	--	--
2/18	Maryland	--	9.8 (6t)	--	--	--
2/25	New Hampshire	--	--	--	--	--
3/3	Denver	--	9.775 (5t)	--	--	--
3/10	WVU	--	9.775 (5t)	--	--	--
3/16	LSU	--	9.775 (6t)	--	--	--
3/24	EAGL	--	9.8 (10t)	--	--	--
4/7	Regionals	--	9.75 (30t)	--	--	--
RQS		--	9.785	--	--	--
Average		--	9.744	9.381	--	--
2012 High		--	9.825	9.85	--	--
Career High		--	9.875	9.85	--	--

## Meet-by-Meet (Placements), Season and Career Statistics



### Lia Salzano

Career Statistics			
Year	Meets	AA	Total Points
2012	7	0	104.375

#### Meet-by-Meet in 2012

Date	Place	Vault	Bars	Beam	Floor	A-A
1/8	WVU	9.775 (6t)	9.65 (15t)	--	--	--
1/15	WVU	9.65 (8)	9.1 (9)	--	--	--
1/21	Bowling Green	--	8.925 (11)	--	--	--
1/29	WVU	--	--	--	--	--
2/3	Michigan	--	--	--	--	--
2/12	WVU	--	--	9.825 (4)	--	--
2/18	Maryland	--	--	9.725 (6t)	--	--
2/25	New Hampshire	9.675 (11)	9.75 (7)	9.25 (10t)	--	--
3/3	Denver	--	--	9.05 (21)	--	--
3/10	WVU	--	--	--	--	--
3/16	LSU	--	--	--	--	--
3/24	EAGL	--	--	--	--	--
4/7	Regionals	--	--	--	--	--
RQS		--	--	--	--	--
Average		9.7	9.36	9.47	--	--
2012 High		9.775	9.75	9.825	--	--
Career High		9.775	9.75	9.825	--	--

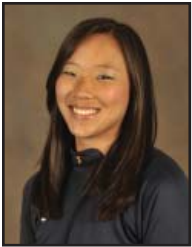


### Erica Smith

Career Statistics			
Year	Meets	AA	Total Points
2012	10	0	134.35

#### Meet-by-Meet in 2012

Date	Place	Vault	Bars	Beam	Floor	A-A
1/8	WVU	--	--	--	--	--
1/15	WVU	--	--	--	--	--
1/21	Bowling Green	--	9.125 (10)	--	--	--
1/29	WVU	--	9.625 (8t)	--	--	--
2/3	Michigan	--	--	--	--	--
2/12	WVU	--	9.825 (7t)	--	--	--
2/18	Maryland	--	9.85 (2t)	--	--	--
2/25	New Hampshire	--	9.05 (12)	--	--	--
3/3	Denver	--	9.825 (3)	--	--	--
3/10	WVU	--	9.75 (7t)	9.55 (10)	--	--
3/16	LSU	--	9.725 (8t)	8.95 (12)	--	--
3/24	EAGL	--	9.85 (6)	9.65 (27)	--	--
4/7	Regionals	--	9.825 (11t)	9.75 (18t)	--	--
RQS		--	9.795	--	--	--
Average		--	9.645	9.475	--	--
2012 High		--	9.85	9.75	--	--
Career High		--	9.85	9.75	--	--



### Hope Sloankoffer

Career Statistics			
Year	Meets	AA	Total Points
2012	13	13	508.5
2011	13	1	392.325
Totals	26	14	900.825

#### Meet-by-Meet in 2012

Date	Place	Vault	Bars	Beam	Floor	A-A
1/8	WVU	9.875 (2)	9.775 (4t)	9.8 (3t)	9.85 (2t)	39.3 (2)
1/15	WVU	9.875 (1t)	9.375 (7)	9.775 (1)	9.8 (1t)	38.825 (2)
1/21	Bowling Green	9.825 (1t)	9.775 (2)	9.7 (2)	9.775 (7t)	39.075 (1)
1/29	WVU	9.875 (2t)	9.8 (2)	9.75 (5t)	9.775 (4t)	39.2 (1)
2/3	Michigan	9.775 (5t)	9.75 (5t)	9.825 (1)	9.775 (7)	39.125 (2)
2/12	WVU	9.775 (6t)	9.85 (4t)	9.85 (1t)	9.7 (6t)	39.175 (1)
2/18	Maryland	9.675 (7)	9.85 (2t)	9.875 (1)	9.75 (11)	39.15 (1)
2/25	New Hampshire	9.825 (4t)	9.775 (5t)	9.85 (2)	9.725 (11)	39.175 (1)
3/3	Denver	9.9 (2t)	9.725 (9t)	9.7 (8t)	9.775 (10t)	39.1 (4)
3/10	WVU	9.775 (7)	9.8 (4)	9.95 (1t)	9.05 (11)	38.575 (4)
3/16	LSU	9.775 (5t)	9.725 (8t)	9.7 (10)	9.775 (10t)	38.975 (5)
3/24	EAGL	9.9 (1t)	9.9 (1)	9.8 (4t)	9.9 (2t)	39.5 (1)
4/7	Regionals	9.85 (10t)	9.8 (13t)	9.85 (3t)	9.825 (13t)	39.325 (6t)
RQS		9.87	9.815	9.84	9.795	39.2
Average		9.823	9.762	9.802	9.729	39.115
2012 High		9.9	9.9	9.95	9.9	39.5
Career High		9.95	9.9	9.95	9.9	39.5



### Maci Sump

Career Statistics			
Year	Meets	AA	Total Points

#### Meet-by-Meet in 2012

Date	Place	Vault	Bars	Beam	Floor	A-A
1/8	WVU	--	--	--	--	--
1/15	WVU	--	--	--	--	--
1/21	Bowling Green	--	--	--	--	--
1/29	WVU	--	--	--	--	--
2/3	Michigan	--	--	--	--	--
2/12	WVU	--	--	--	--	--
2/18	Maryland	--	--	--	--	--
2/25	New Hampshire	--	--	--	--	--
3/3	Denver	--	--	--	--	--
3/10	WVU	--	--	--	--	--
3/16	LSU	--	--	--	--	--
3/24	EAGL	--	--	--	--	--
4/7	Regionals	--	--	--	--	--
RQS		--	--	--	--	--
Average		--	--	--	--	--
2012 High		--	--	--	--	--
Career High		--	--	--	--	--

## Meet-by-Meet (Placements), Season and Career Statistics



### Bethany Yurko

Year	Career Statistics		Total Points
	Meets	AA	
2012	5	0	48.525

#### Meet-by-Meet in 2012

Date	Place	Vault	Bars	Beam	Floor	A-A
1/8	WVU	9.7 (10t)	--	--	--	--
1/15	WVU	9.75 (6)	--	--	--	--
1/21	Bowling Green	--	--	--	--	--
1/29	WVU	9.725 (8t)	--	--	--	--
2/3	Michigan	9.65 (11)	--	--	--	--
2/12	WVU	--	--	--	--	--
2/18	Maryland	--	--	--	--	--
2/25	New Hampshire	--	--	--	--	--
3/3	Denver	--	--	--	--	--
3/10	WVU	--	--	--	--	--
3/16	LSU	9.7 (10)	--	--	--	--
3/24	EAGL	--	--	--	--	--
4/7	Regionals	--	--	--	--	--
RQS		--	--	--	--	--
Average		9.705	--	--	--	--
2012 High		9.75	--	--	--	--
Career High		9.75	--	--	--	--

**2012 Vault Lineup Meet-by-Meet**

Meet	1	2	3	4	5	6
PSU, UMD (48.825)	Haley (9.775)	Yurko (9.7)	Salzano (9.775)	Maloney (9.7)	Richardson (8.95)	Sloanhoffer (9.875)
RU (48.975)	Haley (9.775)	Yurko (9.75)	Salzano (9.65)	Maloney (9.7)	Richardson (9.875)	Sloanhoffer (9.875)
@BGSU (48.575)	Haley (9.625)	Millick (9.625)	Goldschrafe (9.6)	Maloney (9.775)	Richardson (9.725)	Sloanhoffer (9.825)
GW, TU (49.1)	Haley (9.775)	Yurko (9.725)	Goldschrafe (9.825)	Maloney (9.75)	Richardson (9.875)	Sloanhoffer (9.875)
@UM (48.75)	Haley (9.725)	Yurko (9.65)	Goldschrafe (9.75)	Maloney (9.725)	Richardson (9.775)	Sloanhoffer (9.775)
OSU, BSU, AU (49.075)	Haley (9.75)	Millick (9.725)	Goldschrafe (9.85)	Maloney (9.9)	Richardson (9.8)	Sloanhoffer (9.775)
@UMD, RU, W&M (48.125)	Haley (9.5)	Millick (9.575)	Goldschrafe (9.65)	Maloney (9.575)	Richardson (9.65)	Sloanhoffer (9.675)
@UNH (49.2)	Salzano (9.675)	Millick (9.8)	Goldschrafe (9.85)	Maloney (9.875)	Richardson (9.85)	Sloanhoffer (9.825)
@DU, Mizzou, WMU (49.0)	Haley (9.725)	Millick (9.625)	Maloney (9.75)	Goldschrafe (9.825)	Richardson (9.8)	Sloanhoffer (9.9)
Arkansas (48.925)	Haley (9.725)	Millick (9.625)	Maloney (9.75)	Goldschrafe (9.8)	Richardson (9.875)	Sloanhoffer (9.775)
@LSU (48.625)	Millick (9.725)	Yurko (9.7)	Maloney (9.625)	Goldschrafe (9.75)	Sloanhoffer (9.775)	Richardson (9.675)
@EAGLs (49.25)	Haley (9.7)	Millick (9.8)	Maloney (9.85)	Goldschrafe (9.85)	Sloanhoffer (9.9)	Richardson (9.85)
@Regionals (49.2)	Haley (9.8)	Millick (9.825)	Maloney (9.775)	Goldschrafe (9.85)	Sloanhoffer (9.85)	Richardson (9.875)

**2012 Uneven Bars Lineup Meet-by-Meet**

Meet	1	2	3	4	5	6
PSU, UMD (48.6)	Salzano (9.1)	Goldschrafe (9.675)	Roach (9.725)	Maloney (9.65)	Sloanhoffer (9.775)	Millick (9.775)
RU (47.175)	Salzano (9.1)	Goldschrafe (8.575)	Roach (9.6)	Maloney (9.525)	Sloanhoffer (9.375)	Millick (9.575)
@BGSU (47.85)	Salzano (8.925)	Smith (9.125)	Roach (9.75)	Maloney (9.675)	Sloanhoffer (9.775)	Millick (9.525)
GW, TU (48.6)	Smith (9.625)	Roach (9.825)	Maloney (9.5)	Sloanhoffer (9.8)	Millick (9.775)	Haley (9.575)
@UM (48.55)	Haley (9.625)	Roach (9.675)	Maloney (9.6)	Sloanhoffer (9.75)	Millick (9.775)	Goldschrafe (9.725)
OSU, BSU, AU (48.975)	Haley (9.7)	Roach (9.675)	Maloney (9.75)	Sloanhoffer (9.85)	Millick (9.85)	Smith (9.825)
@UMD, RU, W&M (49.175)	Haley (9.775)	Roach (9.8)	Maloney (9.75)	Sloanhoffer (9.85)	Millick (9.9)	Smith (9.85)
@UNH (48.65)	Salzano (9.75)	Goldschrafe (9.675)	Maloney (9.6)	Sloanhoffer (9.775)	Millick (9.85)	Smith (9.05)
@DU, Mizzou, WMU (48.425)	Haley (9.475)	Roach (9.775)	Maloney (9.0)	Sloanhoffer (9.725)	Millick (9.625)	Smith (9.825)
Arkansas (48.875)	Haley (9.7)	Roach (9.775)	Maloney (9.675)	Sloanhoffer (9.8)	Millick (9.85)	Smith (9.75)
@LSU (48.675)	Goldschrafe (9.65)	Haley (9.675)	Roach (9.775)	Sloanhoffer (9.725)	Millick (9.775)	Smith (9.725)
@EAGLs (49.175)	Haley (9.8)	Maloney (9.5)	Roach (9.8)	Sloanhoffer (9.9)	Millick (9.825)	Smith (9.85)
@ Regionals (48.925)	Haley (9.65)	Maloney (9.7)	Roach (9.75)	Sloanhoffer (9.8)	Millick (9.85)	Smith (9.825)

**2012 Balance Beam Lineup Meet-by-Meet**

Meet	1	2	3	4	5	6
PSU, UMD (48.6)	Goldschrafe (9.55)	Maloney (9.625)	Haley (9.0)	Carpenter (9.8)	Deal (9.825)	Sloanhoffer (9.8)
RU (48.4)	Maloney (9.575)	Goldschrafe (9.575)	Millick (9.75)	Carpenter (9.55)	Deal (9.725)	Sloanhoffer (9.775)
@BGSU (48.1)	Maloney (9.6)	Goldschrafe (9.525)	Roach (9.45)	Carpenter (9.675)	Deal (9.6)	Sloanhoffer (9.7)
GW, TU (49.0)	Maloney (9.75)	Goldschrafe (9.8)	Roach (9.85)	Millick (9.85)	Carpenter (9.75)	Sloanhoffer (9.75)
@UM (47.975)	Maloney (9.525)	Goldschrafe (9.15)	Roach (9.15)	Millick (9.725)	Carpenter (9.75)	Sloanhoffer (9.825)
OSU, BSU, AU (49.025)	Maloney (9.75)	Roach (9.075)	Carpenter (9.775)	Millick (9.825)	Sloanhoffer (9.85)	Salzano (9.825)
@UMD, RU, W&M (48.7)	Maloney (9.675)	Goldschrafe (9.75)	Carpenter (9.275)	Millick (9.675)	Sloanhoffer (9.875)	Salzano (9.725)
@UNH (47.45)	Maloney (9.1)	Goldschrafe (9.775)	Carpenter (9.25)	Millick (9.325)	Sloanhoffer (9.85)	Salzano (9.25)
@UD, Mizzou, WMU (47.8)	Maloney (8.9)	Goldschrafe (9.65)	Salzano (9.05)	Millick (9.675)	Sloanhoffer (9.7)	Deal (9.725)
Arkansas (48.725)	Smith (9.55)	Goldschrafe (9.675)	Carpenter (9.725)	Millick (9.825)	Sloanhoffer (9.95)	Deal (9.025)
@LSU (48.575)	Smith (8.95)	Goldschrafe (9.775)	Carpenter (9.775)	Millick (9.8)	Sloanhoffer (9.7)	Deal (9.525)
@EAGLs (48.85)	Smith (9.65)	Goldschrafe (9.8)	Carpenter (9.7)	Millick (9.075)	Sloanhoffer (9.8)	Deal (9.9)
@ Regionals (48.825)	Smith (9.75)	Goldschrafe (9.675)	Carpenter (9.75)	Millick (9.8)	Sloanhoffer (9.85)	Deal (9.225)

**2012 Floor Exercise Lineup Meet-by-Meet**

Meet	1	2	3	4	5	6
PSU, UMD (49.075)	Haley (8.625)	Goldschrafe (9.725)	Richardson (9.825)	Bristol (9.8)	Sloanhoffer (9.85)	Maloney (9.875)
RU (48.875)	Millick (9.8)	Goldschrafe (9.725)	Richardson (9.775)	Bristol (9.725)	Sloanhoffer (9.8)	Maloney (9.775)
@BGSU (48.95)	Millick (9.8)	Goldschrafe (9.725)	Richardson (9.85)	Bristol (9.8)	Sloanhoffer (9.775)	Maloney (9.575)
GW, TU (49.075)	Millick (9.825)	Bristol (9.775)	Sloanhoffer (9.775)	Richardson (9.875)	Maloney (9.675)	Goldschrafe (9.825)
@UM (48.775)	Sloanhoffer (9.775)	Haley (9.65)	Goldschrafe (9.75)	Bristol (9.8)	Richardson (9.8)	Maloney (9.65)
OSU, BSU, AU (48.1)	Millick (9.6)	Goldschrafe (9.675)	Maloney (9.075)	Sloanhoffer (9.7)	Bristol (9.4)	Richardson (9.725)
@UMD, RU, W&M (48.8)	Sloanhoffer (9.75)	Goldschrafe (8.95)	Bristol (9.725)	Millick (9.825)	Richardson (9.775)	Maloney (9.725)
@UNH (48.925)	Sloanhoffer (9.725)	Goldschrafe (9.75)	Bristol (9.775)	Millick (9.8)	Richardson (9.825)	Maloney (9.775)
@UD, Mizzou, WMU (48.95)	Goldschrafe (9.7)	Bristol (9.775)	Sloanhoffer (9.775)	Maloney (9.65)	Richardson (9.875)	Millick (9.825)
Arkansas (49.15)	Goldschrafe (9.8)	Bristol (9.85)	Sloanhoffer (9.05)	Maloney (9.725)	Richardson (9.9)	Millick (9.875)
@LSU (49.025)	Goldschrafe (9.775)	Bristol (9.675)	Sloanhoffer (9.775)	Maloney (9.825)	Millick (9.8)	Richardson (9.85)
@EAGLs (49.2)	Goldschrafe (9.775)	Bristol (9.825)	Sloanhoffer (9.9)	Maloney (9.075)	Millick (9.9)	Richardson (9.8)
@ Regionals (48.95)	Goldschrafe (9.75)	Bristol (9.775)	Millick (9.75)	Richardson (9.8)	Sloanhoffer (9.825)	Maloney (9.8)

## Mountaineers in the Rankings

	Vault	Bars	Beam	Floor	All-Around
<b>Makenzie Bristol</b> SE Region Top 25	--	--	--	9.8 T25	--
<b>Amanda Carpenter</b>	--	--	9.75	--	--
<b>Beth Deal</b>	--	--	9.68	--	--
<b>Chelsea Goldschrafe</b> EAGL Top 10 SE Region Top 25	9.83 T10 19	--	9.755	9.77	--
<b>Dayah Haley</b>	9.74	9.695	--	--	--
<b>Tina Maloney</b> EAGL Top 10 SE Region Top 25	9.8 25	9.67	9.635	9.765	38.62 9 15
<b>Kaylyn Millick</b> EAGL Top 10 SE Region Top 25	9.7	9.83 T5 15	9.77 21	9.83 T17	38.92 7 11
<b>Alaska Richardson</b> EAGL Top 10 SE Region Top 25	9.85 7 15	--	--	9.855 T3 T9	--
<b>Nicole Roach</b> SE Region Top 25	--	9.785 24	--	--	--
<b>Hope Sloanhoffer</b> EAGL Top 10 SE Region Top 25 NCAA Top 50	9.87 4 10 47	9.815 9 T18	9.84 T4 T10 T48	9.795	39.2 1 6 T33
<b>Erica Smith</b> SE Region Top 25	--	9.795 22	--	--	--

\*\*Rankings based on RQS

### How to Calculate an RQS...

Qualification for regional competition is based on a team's and an all-around competitor's six best regular-season meet scores, of which three must be from away meets. To obtain the regional qualifying score (RQS), the high score is eliminated and the remaining five scores are averaged. Gymnasts and their scores not listed above have not acquired enough scores for an RQS.