



# GYMNASTICS

WVU ATHLETIC COMMUNICATIONS  
PO Box 877 | Morgantown, WV 26507-0877  
304.293.2821

WVUSPORTS.com

## 2017 WVU Gymnastics Schedule

| Date     | Opponent (TV)  | Time               |
|----------|--|--------------------|
| Jan. 8   | at Maryland  | W, 194.4-193.95    |
| Jan. 13  | at Pitt (ACCNE)  | L, 194.025-193.875 |
| Jan. 21  | No. 1 Oklahoma*  | L, 197.925-195.55  |
| Jan. 29  | No. 7 Denver*  | W, 196.3-195.9     |
|          | Temple   | W, 196.3-193.625   |
|          | Towson   | W, 196.3-194.775   |
| Feb. 4   | at Kent State  | W, 195.95-194.875  |
| Feb. 12  | at Towson  | L, 195.025-194.575 |
|          | North Carolina   | L, 195.525-194.575 |
|          | Temple   | W, 194.575-193.575 |
| Feb. 18  | at No. 19 Ohio State                                       | L, 196.075-195.8   |
| Feb. 26  | No. 24 Iowa State*   | W, 195.95-195.725  |
|          | Maryland   | W, 195.95-195.45   |
| March 3  | at Pitt with Towson  | 6:30 p.m.          |
|          | Michigan State (ACCNE)                                     |                    |
| March 5  | Pitt, No. 16 George Washington and No. 24 Eastern Michigan | 2 p.m.             |
| March 10 | at Florida (SECN+)   | 7 p.m.             |
| March 18 | Big 12 Gymnastics Championship                             | 5 p.m.             |
| April 1  | NCAA Morgantown Regional                                   | 4 p.m.             |
| April 14 | NCAA National Championships                                | TBA                |

\* - Big 12 opponent  
# - Wendy M. Roach Invitational Pink Meet  
^ - Dr. Pepper Arena (Frisco, Texas)  
& - St. Louis, Missouri

All times Eastern

## Tracking the Tumblers

### Media Services

The WVU athletic communications office will be available throughout the 2017 gymnastics season to accommodate any media requests. Members of the media wishing to interview a gymnast or member of the coaching staff during the week should contact associate director, WVU Athletic Communications/gymnastics contact Shannon McNamara at (304) 293-2821 or by email at Shannon.McNamara@mail.wvu.edu.

### Game Services

The WVU athletic communications staff will be at your service throughout the meet. Press seating is located in the middle section of the WVU Coliseum press row. Internet access is available for working media members.

### WVUsports.com

WVUsports.com is the place for media and fans to go for the latest news on Mountaineer gymnastics. Streamed audio and video broadcasts will be available on WVU's official athletic website, along with live stats to keep track of every routine. Meet notes are made available in PDF format one day prior to meet day.

### Big 12 Digital Media

Fans can follow the Big 12 on Twitter (@Big12Conference), Facebook (facebook.com/Big12), Instagram (@Big12Conference) and YouTube (youtube.com/big12conference).



@WVUGymnastics  
@CoachJasonButts  
@WVUSports



WVUGymnastics



@WVUGymnastics



@WVUGymnastics

## West Virginia at Pitt with Michigan State and Towson

Friday, March 3 • 6:30 p.m. EST • Fitzgerald Field House (6,798) • Pittsburgh, Pa.  
Links for Video Stream and Live Scores: WVUsports.com



(8-5, 1-1)



(6-10, 0-5 EAGL)



(4-6, 0-6 Big Ten)



(7-8, 0-4 EAGL)

### Meet Minutes

The West Virginia University gymnastics team returns to Pitt's Fitzgerald Field House for the second time this season for a quad meet with the Panthers, Michigan State and Towson on Friday, March 3, at 6:30 p.m. The Mountaineers have scored 195.8 or better the last two meets. WVU tallied a season-best 196.3 in wins over No. 7 Denver, Temple and Towson on Jan. 29 at the WVU Coliseum. The score ranks No. 18 in program history. The Mountaineers sit just outside the top 25 in the Road to Nationals Rankings for the second straight week and check in at No. 26 with a 195.565 RQS. A pair of Mountaineer gymnasts own three national rankings. Kirah Koshinski ranks No. 17 on vault (9.88 RQS) and No. 24 on floor exercise (9.885 RQS), and Zaakira Muhammad ranks No. 25 on vault (9.855 RQS). Currently, a freshman or sophomore is featured in 12 of the Mountaineers' 24 lineup spots. All 12 gymnasts who have seen competitive time this season have reached the podium. Kirah Koshinski paces the team with nine event victories. Kirah Koshinski (floor) is the first Mountaineer gymnast in 2017 to score 9.95 or better on any event. Four different gymnasts tallied the mark on floor in 2016.

### WVU vs. the Panthers

WVU and Pitt first met in 1974, the first season for Mountaineer gymnastics. WVU owns a 57-13-2 all-time series edge against the Panthers, a former foe in the East Atlantic Gymnastics League (EAGL). A poor showing on uneven bars in the first rotation was too much for the Mountaineers to overcome in their first meet at Pitt this season, as WVU dropped a 194.025-193.875 decision on Jan. 13. The loss was WVU's first in the series since 1992.

### WVU vs. the Spartans

Friday is the 23rd meeting between the Mountaineers and MSU and the first since 2011. WVU trails the all-time series, 10-11-1. In their last meeting, WVU earned a 194.0-192.575 win over the Spartans in the program's first-ever Beauty and the Beast meet at the WVU Coliseum on Jan. 14, 2011.

### WVU vs. the Tigers

Friday is the third meeting of the season between the Mountaineers and the Tigers and the first at a neutral site. The teams each earned a victory in their home meet, including a 196.3-194.775 WVU win on Jan. 29, at the WVU Coliseum. The Mountaineers are 21-11 all-time against the Tigers.

### A Look at the Field

The Panthers are coming off a 195.2-193.525 loss to Penn State on Feb. 25, in University Park, Pennsylvania. At the meet, senior Tracey Pearson finished second on floor (9.85), while sophomore Brittany West placed second on beam (9.85). Friday will serve as Senior Night for four Panthers: Pearson, Erika Reichert, Ellie Pitkula and Kelly Burak. MSU defeated No. 21 Arkansas, 195.55-185.275, on Feb. 25, in East Lansing, Michigan. The team total was the Spartans' second-highest mark of the year. The squad posted 49.075 on beam, the 16th-best mark in program history. The Tigers earned a season-high 195.675 in a win over Rutgers (194.275) on Feb. 24, at the SECU Arena, in Towson, Maryland. The score was the team's top mark since March 22, 2015, and ranks No. 2 in the program's record book. Junior Gabriella Yarussi finished first in the all-around with a 39.225 total.

### Noteworthy

The Mountaineers are 3-4 on the road this season ... WVU is 2-2 against ranked teams ... Alexa Goldberg paces the team with 1,253.925 points ... she needs 142.375 points to break onto the WVU Career Points Top 20 List ... Kirah Koshinski ranks No. 1 on the team, No. 10 in program history, with 15 career scores of 9.9 or better ... nine of Koshinski's 9.9 scores have been earned on vault, the fifth-best mark in program history ... she needs six more vault scores of 9.9 or better to move into fourth place ... Koshinski's six additional career scores of 9.9+ have been earned on floor exercise, and she is tied with assistant coach Kaylyn Millicik at No. 10 in program history ... she needs three more scores of 9.9 or better on floor to move into ninth place ... Goldberg ranks No. 18 in program history with 11 career scores of 9.9+ ... eight of her marks have been earned on bars, the third-best total in WVU history ... she needs one more bars score of 9.9 or better to move to No. 2 all-time ... Goldberg owns a team-best 27 career wins, with 21 victories on bars, and Koshinski ranks second on the team with 18 career event wins ... Koshinski has scored 9.8 or better in all but 14 of her 59 collegiate routines ... Zaakira Muhammad ranks No. 1 on the team with 50 career podium finishes, and Goldberg follows in second place with 49 ... Tiara Wright (435.175) needs 62.825 points to reach the 500 career-point mark ... Muhammad (908.575) needs 91.425 points to reach the 1,000 career mark ... WVU has counted only two falls this season, matching its 2016 fall count.

## 2017 Highlights



### Head Coach Jason Butts

- At WVU: Sixth Season
- Record at WVU: 73-47-1 (.607)
- Career Record: 73-47-1 (.607)

#### Coaching Experience

- West Virginia Head Coach (2012-present)
- West Virginia Associate Head Coach (2011)
- West Virginia Assistant Head Coach (2010)
- West Virginia Assistant Coach (2007-09)

#### Career Coaching Highlights

- Coached Kirah Koshinski to NACGC/W Regular-Season All-America Second Team Vault honors in 2016, the first regular season All-America award for a WVU gymnast; Koshinski also was named the Big 12 Newcomer of the Year, the first Big 12 postseason honor for a Mountaineer
- Led the Mountaineers to a program best second-place finish at the 2015 Big 12 Gymnastics Championship
- Coached Hope Sloanhoffer to an individual all-around qualification at the 2014 NCAA National Championships, WVU's first qualifier since 2009
- Ushered in a new era for WVU gymnastics, as he led WVU to a 13-9 record in 2013, its first season in the Big 12 Conference
- WVU scored 196.0 or better in each home meet in 2013, a program first
- Led the Mountaineers to the 2012 EAGL title in his first season as head coach
- WVU scored 195.9 at the 2012 NCAA Auburn Regional, its best-ever regional mark
- Mountaineers finished 2012 ranked No. 21, the team's first season-ending ranking since 2009, and with a 21-5 record, the team's first 20-win mark since 2008
- Coached five individual conference champions
- Coached 18 all-conference gymnasts
- Coached 33 NACGC/W Scholastic All-Americans
- Two-time Southeast Regional Assistant Coach of the Year

#### Education

Georgia, 2006

- Bachelor's degree (business administration and management)

West Virginia, 2012

- Master's degree (athletic coaching education)

### WVU by the Numbers

|            | Average | RQS     | Season High       |
|------------|---------|---------|-------------------|
| Team Score | 195.3   | 195.565 | 196.3 (1/29)      |
| Team V     | 49.006  | 49.02   | 49.25 (1/29)      |
| Team UB    | 48.744  | 48.905  | 49.175 (1/29)     |
| Team BB    | 48.59   | 48.705  | 49.1 (2/26)       |
| Team FE    | 48.959  | 49.065  | 49.2 (1/21, 1/29) |

|            | Score | Gymnast          | Date            |
|------------|-------|------------------|-----------------|
| All-Around | 39.4  | Zaakira Muhammad | 2/26            |
| V          | 9.925 | Kirah Koshinski  | 1/8             |
| UB         | 9.875 | Tiara Wright     | 1/29, 2/12      |
|            |       | Alexa Goldberg   | 1/29, 2/4, 2/12 |
| BB         | 9.9   | Jordan Gillette  | 1/8             |
| FE         | 9.95  | Kirah Koshinski  | 1/21            |

#### • Meet 1: WVU at Maryland (1/8) | College Park, Md.

The Mountaineers opened the 2017 season with a come-from-behind, 194.4-193.95 win at Maryland, inside the XFINITY Center. Down 146.025-145.725 after three events, the team strung together four scores of 9.75 or better to close its beam rotation with a 48.675 total, good enough to edge the Terrapins' 47.925 showing on floor.

Kirah Koshinski paced the Mountaineers on three events, earned two wins and matched two career highs in a strong showing. Koshinski finished first on vault (9.925) and floor (9.85) and tied for second place on beam (9.8); the vault and beam marks were career highs. Jordan Gillette won beam with a career-high 9.9.

#### • Meet 2: No. 19 WVU at Pitt (1/13) | Pittsburgh, Pa.

Despite defeating the Panthers on three of the four events, WVU suffered a 194.025-193.875 loss at Pitt, inside Fitzgerald Field House. WVU won vault (48.8), beam (48.425) and floor (48.85) but could not overcome a 47.8 showing on bars.

Kirah Koshinski earned two event titles, tying Zaakira Muhammad for the vault win with a 9.85 mark and scoring 9.875 for the floor victory. Carly Galpin made her season debut on beam and tied for first place with a 9.825 score, while Tiara Wright paced the team on bars and finished third overall with a 9.8.

#### • Meet 3: WVU vs. No. 1 Oklahoma (1/21) | Morgantown

The Mountaineers opened their home season at the WVU Coliseum with a 197.925-195.55 loss to No. 1 Oklahoma. WVU was powered by a season-high mark of 49.2 on floor.

Kirah Koshinski matched her career-best floor score of 9.95 and tied for second place, the highest individual finish for WVU. She also paced on vault and tied Zaakira Muhammad for fifth place with a 9.85. Tiara Wright paced on bars for the second straight week with a 9.825, and Brooklyn Doggette led the team on beam with a 9.825 mark, matching a career high first set in 2015.

#### • Meet 4: No. 25 WVU vs. No. 7 Denver, Temple and Towson (1/29) | Morgantown

The Mountaineers tallied the 18th-best score in program history in a first place, 196.3 showing at the WVU Coliseum in their first quad meet of the season. No. 7 Denver (195.9) finished in second place, while Towson (194.775) placed third and Temple (193.625) finished in fourth place. The victory over the Pioneers was WVU's first against a top-10 team since 2012.

WVU set or matched season highs on all four events: vault (49.25), bars (49.175), beam (48.675) and floor (49.2). Kirah Koshinski tied for the floor win with a 9.9 and also tied Zaakira Muhammad for second place on vault (9.9). Alexa Goldberg and Tiara Wright tied for first place on bars with season-high scores 9.875, and Jordan Gillette finished a team-best fourth on beam (9.85).

#### • Meet 5: No. 25 WVU at Kent State (2/4) | Kent, Ohio

Coming off a season-best performance, the Mountaineers achieved their top road score, earning a 195.95-194.875 win at Kent State, inside the M.A.C. Center. WVU swept the team and individual competitions.

Alexa Goldberg earned her first all-around victory of the season, tallying 39.15. She also won bars and matched her season-best mark of 9.875. Kirah Koshinski scored 9.9 on vault and floor for the wins, and Brooklyn Doggette earned her first career victory with a 9.825 showing on balance beam.

#### • Meet 6: No. 24 WVU at Towson with Temple and North Carolina (2/12) | Towson, Maryland

A slow start on balance beam was too much for the Mountaineers to overcome, as they finished in third place at Towson with a 194.575 mark inside the SECU Arena. WVU finished first on bars with a season-best road score of 49.075 and also won vault with a 48.975 total. The Mountaineers finished third on floor (48.85) and fourth on beam (47.675).

Zaakira Muhammad won her second vault title of the season with a 9.85 mark. Alexa Goldberg and Tiara Wright tied for first on bars with season-best marks of 9.875. Kirah Koshinski paced on floor (9.85) and beam (9.75).

#### • Meet 7: No. 24 WVU at No. 19 Ohio State (2/18) | Columbus, Ohio

Despite overtaking the Buckeyes in the third rotation, the Mountaineers had to settle for a narrow 196.075-195.8 loss at Ohio State's St. John Arena. WVU hit 24-for-24 for the first time this year and scored a season-high road score of 48.825 on balance beam, as well as a winning 49.05 mark on vault.

Kirah Koshinski scored 9.9 on vault and earned her fourth win of the season. Chloe Cluchey returned to the floor lineup for the first time since Jan. 8 and won the event with a 9.925 mark. Alexa Goldberg and Tiara Wright tied for third on bars with 9.825s, and Carly Galpin finished second on beam with a 9.85.

#### • Meet 8: WVU vs. No. 24 Iowa State and Maryland (2/26) | Morgantown

A season-high 49.1 on balance beam helped push the Mountaineers to a 195.95 showing and wins over the Cyclones (195.725) and Terrapins (195.45) at the WVU Coliseum. WVU finished the day with team wins on beam, bars (48.825) and floor (49.125).

Zaakira Muhammad was the talk of the meet, tallying a winning, career-high 39.4 in her first all-around appearance of the season. She also won beam with a career-best 9.875 and finished second on vault (9.875) and bars (9.825). Alexa Goldberg won bars with a 9.85, while Kirah Koshinski finished first on floor with a 9.9.

## WVU vs. the Field (Road to Nationals Ranking Comparison; RQS as of 2/27)

| Team               | Total                      | V                                     | UB                           | BB                                     | FE                      |
|--------------------|----------------------------|---------------------------------------|------------------------------|--|-------------------------|
| WVU                | 26, 195.565                | 19, 49.02                             | 28, 48.905                   | 34, 48.705                             | 22, 49.065              |
| Individual Leaders |                            |                                       |                              |  |                         |
|                    | V: K. Koshinski, T17, 9.88 | UB: T. Wright, A. Goldberg, T57, 9.84 | BB: K. Koshinski, T147, 9.77 | FE: K. Koshinski, T24, 9.885           | AA: N/A                 |
| Pitt               | 52, 193.92                 | 45, 48.595                            | 50, 48.5                     | 57, 48.2                               | 42, 48.865              |
| Individual Leaders |                            |                                       |                              |  |                         |
|                    | V: T. Pearson, T47, 9.835  | UB: L. Brett, T162, 9.765             | BB: B. West, T132, 9.78      | FE: T. Pearson, T60, 9.845             | AA: N/A                 |
| Towson             | 39, 194.515                | 52, 48.485                            | 44, 48.62                    | 31, 48.76                              | 37, 48.915              |
| Individual Leaders |                            |                                       |                              |  |                         |
|                    | V: N. Deans, T77, 9.815    | UB: L. Lemke, T70, 9.83               | BB: G. Douglas, T128, 9.785  | FE: N. Deans, K. Frederick, T48, 9.855 | AA: N. Deans, 32, 39.06 |
| Temple             | 43, 194.375                | 54, 48.445                            | 42, 48.635                   | 37, 48.66                              | T34, 48.93              |
| Individual Leaders |                            |                                       |                              |  |                         |
|                    | V: E. Tucker, T144, 9.77   | UB: T. McKellar, T121, 9.8            | BB: G. Yarussi, T54, 9.85    | FE: T. McKellar, T101, 9.82            | AA: N/A                 |

## West Virginia Tentative Lineups

|  | Class | Career High | Season Average | Season High | National Ranking (Top 50) | Regional Ranking (Top 25) | Big 12 Ranking (Top 10) |
|--|-------|-------------|----------------|-------------|---------------------------|---------------------------|-------------------------|
| <b>Vault</b>                               |       |             |                |             |                           |                           |                         |
| Robyn Bernard                              | Jr.   | 9.875       | 9.716          | 9.85        | --                        | T18                       | --                      |
| Alexa Goldberg                             | Sr.   | 9.775       | 9.694          | 9.775       | --                        | --                        | --                      |
| Julia Merwin                               | Fr.   | 9.775       | 9.756          | 9.775       | --                        | T25                       | --                      |
| Chloe Cluchey                              | Fr.   | 9.875       | 9.747          | 9.875       | --                        | --                        | --                      |
| Kirah Koshinski                            | So.   | 9.925       | 9.862          | 9.925       | T17                       | T5                        | 5                       |
| Zaakira Muhammad                           | Jr.   | 9.9         | 9.856          | 9.9         | T25                       | 7                         | T7                      |
| Alternates: Kelsey Sorrenson, Abby Kaufman |       |             |                |             |                           |                           |                         |

|                                       |     |       |       |       |    |     |    |
|---------------------------------------|-----|-------|-------|-------|----|-----|----|
| <b>Uneven Bars</b>                    |     |       |       |       |    |     |    |
| Robyn Bernard                         | Jr. | 9.825 | 9.728 | 9.825 | -- | --  | -- |
| Zaakira Muhammad                      | Jr. | 9.9   | 9.619 | 9.85  | -- | T24 | -- |
| Kassidy Cumber                        | Fr. | 9.775 | 9.521 | 9.775 | -- | --  | -- |
| Alexa Goldberg                        | Sr. | 9.95  | 9.846 | 9.875 | -- | T7  | T9 |
| Jordan Gillette                       | Jr. | 9.775 | 9.671 | 9.775 | -- | --  | -- |
| Tiara Wright                          | So. | 9.9   | 9.828 | 9.875 | -- | T7  | T9 |
| Alternates: Chloe Cluchey, Jaquie Tun |     |       |       |       |    |     |    |

|   |     |       |       |       |    |     |    |
|---|-----|-------|-------|-------|----|-----|----|
| <b>Balance Beam</b>                     |     |       |       |       |    |     |    |
| Alexa Goldberg                          | Sr. | 9.85  | 9.713 | 9.75  | -- | --  | -- |
| Jordan Gillette                         | Jr. | 9.9   | 9.713 | 9.9   | -- | --  | -- |
| Kirah Koshinski                         | So. | 9.85  | 9.747 | 9.85  | -- | T22 | -- |
| Abby Kaufman                            | Fr. | 9.775 | 9.495 | 9.775 | -- | --  | -- |
| Tiara Wright                            | So. | 9.85  | 9.657 | 9.85  | -- | --  | -- |
| Zaakira Muhammad                        | Jr. | 9.875 | 9.875 | 9.875 | -- | --  | -- |
| Alternates: Carly Galpin, Robyn Bernard |     |       |       |       |    |     |    |

|  |     |       |       |       |     |     |    |
|--|-----|-------|-------|-------|-----|-----|----|
| <b>Floor Exercise</b>                    |     |       |       |       |     |     |    |
| Julia Merwin                             | Fr. | 9.85  | 9.668 | 9.85  | --  | --  | -- |
| Robyn Bernard                            | Jr. | 9.825 | 9.77  | 9.825 | --  | --  | -- |
| Tiara Wright                             | So. | 9.8   | 8.5   | 9.0   | --  | --  | -- |
| Zaakira Muhammad                         | Jr. | 9.95  | 9.797 | 9.85  | --  | T14 | -- |
| Chloe Cluchey                            | Fr. | 9.925 | 9.658 | 9.925 | --  | --  | -- |
| Kirah Koshinski                          | So. | 9.95  | 9.884 | 9.95  | T24 | T3  | 8  |
| Alternates: Kassidy Cumber, Abby Kaufman |     |       |       |       |     |     |    |

|                   |     |      |      |      |    |    |    |
|-------------------|-----|------|------|------|----|----|----|
| <b>All-Around</b> |     |      |      |      |    |    |    |
| Zaakira Muhammad  | Jr. | 39.4 | 39.4 | 39.4 | -- | -- | -- |

Lineups based on last meet vs. No. 24 Iowa State and Maryland (2/26)  
 Rankings based on Road to Nationals Rankings (2/27)

### 2017 WVU Gymnastics Roster

| Name              | Ht. | Yr. | Hometown             | Club Gym                             | Career Meets (AA) |
|-------------------|-----|-----|----------------------|--------------------------------------|-------------------|
| Robyn Bernard     | 5-7 | Jr. | Silver Spring, Md.   | Hills Gymnastics                     | 32                |
| Chloe Cluchey     | 5-4 | Fr. | Woodbridge, Va.      | Capital Gymnastics                   | 8                 |
| Kassidy Cumber    | 5-2 | Fr. | Virginia Beach, Va.  | Gymstrada Gymnastics School          | 8                 |
| Brooklyn Doggette | 5-1 | Sr. | Pickerington, Ohio   | Buckeye Gymnastics                   | 18                |
| Erica Fontaine    | 5-5 | Fr. | Gaithersburg, Md.    | Hill's Gymnastics                    | --                |
| Carly Galpin      | 5-3 | So. | Brownsville, Md.     | Frederick Gymnastics                 | 15                |
| Jordan Gillette   | 5-2 | Jr. | Natrona Heights, Pa. | X-Cel Gymnastics                     | 30                |
| Alexa Goldberg    | 5-0 | Sr. | Ivyland, Pa.         | Central Bucks School of Gymnastics   | 44 (14)           |
| Abby Kaufman      | 5-6 | Fr. | York, Pa.            | Prestige Gymnastics                  | 6                 |
| Kirah Koshinski   | 5-0 | So. | Berwick, Pa.         | Northeast Gymnastics                 | 21                |
| Julia Merwin      | 5-4 | Fr. | Frederick, Md.       | Frederick Gymnastics                 | 8                 |
| Zaakira Muhammad  | 5-4 | Jr. | Pennsauken, N.J.     | TNT Elite Gymnastics                 | 33 (5)            |
| Kelsey Sorrenson  | 5-2 | So. | Summerville, S.C.    | Gymnastics Academy of South Carolina | --                |
| Jaquie Tun        | 5-0 | So. | Chattanooga, Tenn.   | Gymnastics Center of Chattanooga     | 13                |
| Tiara Wright      | 5-5 | So. | Wilmington, Del.     | Parkettes National Gymnastics Center | 21                |

**Pronunciation Guide**

First Names: Kirah - KEER-uh  
 Zaakira - za-KEER-uh  
 Jaquie - Jack-ee  
 Tiara - tee-AIR-uh

Last Names: Cluchey - clue-chee  
 Doggette - dog-ett  
 Galpin - GAL-pin  
 Koshinski - coe-SHIN-skee

## Event-by-Event Breakdown

| <u>Season-High Vault Marks</u>  | <b><i>Vault Highlights</i></b>  |
|---|---|
| <ol style="list-style-type: none"> <li>1. 9.925 Koshinski (1/8)</li> <li>2. 9.9 Muhammad (1/29)</li> <li>3. 9.875 Cluchey (1/29)</li> <li>4. 9.85 Bernard (2/4)</li> <li>5. 9.775 Merwin (1/13, 1/29, 2/26)<br/>Goldberg (2/4)</li> </ol>                                       | <ul style="list-style-type: none"> <li>• Five scores of 9.725 or better helped WVU earn the team win at Maryland (1/8) with a 48.975 score. Kirah Koshinski matched her career high with a victorious, 9.925 showing. Zaakira Muhammad finished second with a 9.85 mark, and Julia Merwin tied for third place in her career debut with a 9.75 score.</li> <li>• Paced by winning, 9.85 scores from Zaakira Muhammad and Kirah Koshinski, the Mountaineers finished with a 48.8 mark at Pitt (1/13). Julia Merwin placed fourth with a career-best 9.775.</li> <li>• Zaakira Muhammad and Kirah Koshinski tied for fifth place against No. 1 Oklahoma (1/21) with matching 9.85 scores, and Robyn Bernard and Chloe Cluchey tallied 9.75s.</li> <li>• Five season-high scores helped WVU tally its best mark since 2013 with a winning, 49.25 showing against No. 7 Denver, Temple and Towson (1/29). Kirah Koshinski and Zaakira Muhammad tied for second with 9.9s, a career high for Muhammad.</li> <li>• WVU swept the podium at Kent State (2/4), as Kirah Koshinski tallied 9.9 for the second straight week and finished first, while Robyn Bernard placed second with a season-high 9.85 and Zaakira Muhammad finished third with a 9.825.</li> <li>• Zaakira Muhammad won her second title of the season with a 9.85 showing at Towson with Temple and North Carolina (2/12). Kirah Koshinski and Robyn Bernard tied for third place with 9.825s.</li> <li>• Kirah Koshinski earned her fourth win of the season with a 9.9 score at No. 19 Ohio State (2/18). Zaakira Muhammad finished third with a 9.85 mark, and the Mountaineers earned the event win with a 49.05 total.</li> <li>• Zaakira Muhammad finished second against No. 24 Iowa State and Maryland (2/26) with a 9.875 mark. Robyn Bernard opened the rotation with a fourth place, 9.825 score.</li> </ul> |
| <u>2017 Vault Victories</u>   |   |
| <ol style="list-style-type: none"> <li>1. Koshinski (4)</li> <li>2. Muhammad (2)</li> </ol>   |   |
| <u>2017 Team Scores</u>   |   |
| <ol style="list-style-type: none"> <li>1. 49.25 (HOME, 1/29)</li> <li>2. 49.15 (AWAY, 2/2)</li> <li>3. 49.05 (AWAY, 2/18)</li> <li>4. 48.975 (AWAY, 1/8)<br/>(AWAY, 2/12)</li> <li>6. 48.95 (HOME, 1/21)</li> <li>7. 48.9 (HOME, 2/26)</li> <li>8. 48.8 (AWAY, 1/13)</li> </ol> |   |

| <u>Season-High Bars Marks</u>   | <b><i>Uneven Bars Highlights</i></b>  |
|---|---|
| <ol style="list-style-type: none"> <li>1. 9.875 Wright (1/29, 2/12)<br/>Goldberg (1/29, 2/4, 2/12)</li> <li>3. 9.85 Muhammad (1/29, 2/12)</li> <li>4. 9.825 Bernard (1/29)</li> <li>5. 9.775 Cluchey (1/8)<br/>Gillette (1/21)<br/>Cumber (2/12)</li> <li>8. 9.525 Kaufman (1/13)</li> </ol>    | <ul style="list-style-type: none"> <li>• In her first-ever collegiate routine, Chloe Cluchey tallied a team-best 9.775 at Maryland (1/8) and finished second overall. Tiara Wright finished second on the team with a 9.75 score, and Robyn Bernard tallied 9.725.</li> <li>• Tiara Wright tallied 9.8 at Pitt (1/13) and finished third overall.</li> <li>• Tiara Wright paced for the second straight week and finished fourth overall against Oklahoma (1/21) with a 9.825 score. Jordan Gillette matched her career-high score of 9.775, a mark equaled by Alexa Goldberg in her season debut.</li> <li>• Alexa Goldberg and Tiara Wright scored season-high 9.875s and tied for the win against No. 7 Denver, Temple and Towson (1/29). Their scores, along with two additional season-high marks from Zaakira Muhammad (9.85) and Robyn Bernard (9.825), pushed WVU to a season-best 49.175.</li> <li>• For the second straight week, Alexa Goldberg earned a season-best 9.875, and she captured the win at Kent State (2/4). Tiara Wright anchored the lineup and placed second with a 9.85, and Zaakira Muhammad finished in fourth place with a 9.8.</li> <li>• The last four competing gymnasts scored 9.775 or better in a quad meet at Towson with Temple and North Carolina (2/12), including winning, season-best matching marks of 9.875 from Alexa Goldberg and Tiara Wright. Zaakira Muhammad finished third with a 9.85, and Cassidy Cumber tallied a career-best 9.775.</li> <li>• Alexa Goldberg and Tiara Wright earned matching scores for the third time in four weeks and tied for third place at No. 19 Ohio State (2/18) with 9.825 marks.</li> <li>• For the fourth time in five meets, Alexa Goldberg stood atop the event podium, as she finished first against No. 24 Iowa State and Maryland with a 9.85 score. Zaakira Muhammad and Tiara Wright tied for second place with 9.825s.</li> </ul> |
| <u>2017 Bars Victories</u>  |   |
| <ol style="list-style-type: none"> <li>1. Goldberg (4)</li> <li>2. Wright (2)</li> </ol>  |   |
| <u>2017 Team Scores</u>   |   |
| <ol style="list-style-type: none"> <li>1. 49.175 (HOME, 1/29)</li> <li>2. 49.075 (AWAY, 2/12)</li> <li>3. 48.925 (AWAY, 2/4)</li> <li>4. 48.9 (AWAY, 2/18)</li> <li>5. 48.825 (HOME, 2/26)</li> <li>6. 48.8 (HOME, 1/21)</li> <li>7. 48.45 (AWAY, 1/8)</li> <li>8. 47.8 (AWAY, 1/13)</li> </ol> |   |

## Event-by-Event Breakdown

| <b>Season-High Beam Marks</b>   | <b>Balance Beam Highlights</b>  |
|---|---|
| <ol style="list-style-type: none"> <li>1. 9.9 Gillette (1/8)</li> <li>2. 9.875 Muhammad (2/26)</li> <li>3. 9.85 Galpin (2/18)<br/>Koshinski (2/26)<br/>Wright (2/26)</li> <li>6. 9.825 Doggette (1/21, 2/4)</li> <li>7. 9.775 Kaufman (2/4, 2/18)</li> <li>8. 9.75 Cumber (1/8)<br/>Goldberg (1/13, 2/18)</li> </ol> <p style="text-align: center;"><b><u>2017 Beam Victories</u></b></p> <ol style="list-style-type: none"> <li>1. Galpin (1)<br/>Doggette (1)<br/>Gillette (1)<br/>Muhammad (1)</li> </ol> <p style="text-align: center;"><b><u>2017 Team Scores</u></b></p> <ol style="list-style-type: none"> <li>1. 49.1 (HOME, 2/26)</li> <li>2. 48.825 (AWAY, 2/18)</li> <li>3. 48.75 (AWAY, 2/4)</li> <li>4. 48.675 (AWAY, 1/8)<br/>(HOME, 1/29)</li> <li>6. 48.6 (HOME, 1/21)</li> <li>7. 48.425 (AWAY, 1/13)</li> <li>8. 47.675 (AWAY, 2/12)</li> </ol> | <ul style="list-style-type: none"> <li>• Needing big performances to steal the win at Maryland (1/8), WVU strung together four scores of 9.75 or better to tally a 48.675 team total and secure the season-opening victory. Jordan Gillette won with a career-high 9.9, while Kirah Koshinski tied for second place with a 9.8. In her first routine since the 2015 season, Brooklyn Doggette anchored the lineup with a 9.775 showing, and Kassidy Cumber chipped in a 9.75 score.</li> <li>• Carly Galpin made her season debut at Pitt (1/13) and earned a share of the win with a 9.825 mark. Alexa Goldberg finished in fourth place with a season-best 9.75.</li> <li>• Brooklyn Doggette matched her career-high score of 9.825 and finished fourth overall against No. 1 Oklahoma (1/21).</li> <li>• Three scores of 9.8 or better helped WVU push to 48.675 in wins over No. 7 Denver, Temple and Towson (1/29). Jordan Gillette tallied 9.85 and finished in fourth place.</li> <li>• Brooklyn Doggette earned her first career win at Kent State (2/4), tallying a career-high 9.825 for the second time this season, and WVU finished with a 48.75 total. Kirah Koshinski hit a career-best 9.8 for the third time this year and placed second, and Abby Kaufman finished third in just her second career routine with a 9.775 mark.</li> <li>• Kirah Koshinski paced a tough outing at Towson with Temple and North Carolina (2/12), scoring 9.75 and finishing in 10th place.</li> <li>• Podium finishes by Carly Galpin (second place, 9.85) and Abby Kaufman (third place, 9.775) helped push WVU to a 48.825 at No. 19 Ohio State (2/18).</li> <li>• Paced by a career best, winning 9.875 score from Zaakira Muhammad in her season debut, WVU surged ahead and secured the lead for good against No. 24 Iowa State and Maryland (2/26) with a season-high score of 49.1. Kirah Koshinski and Tiara Wright earned career-high marks of 9.85 and tied for second place.</li> </ul> |

| <b>Season-High Floor Marks</b>   | <b>Floor Exercise Highlights</b>  |
|--|---|
| <ol style="list-style-type: none"> <li>1. 9.95 Koshinski (1/21)</li> <li>2. 9.925 Cluchey (2/18)</li> <li>3. 9.85 Muhammad (1/21, 1/29)<br/>Merwin (1/29, 2/26)</li> <li>5. 9.825 Cumber (1/21, 2/4)<br/>Bernard (1/29)<br/>Goldberg (2/4)</li> <li>8. 9.775 Gillette (1/29)</li> <li>9. 9.675 Kaufman (2/12)</li> <li>10. 9.0 Wright (2/4)</li> </ol> <p style="text-align: center;"><b><u>2017 Floor Victories</u></b></p> <ol style="list-style-type: none"> <li>1. Koshinski (5)</li> <li>2. Cluchey (1)</li> </ol> <p style="text-align: center;"><b><u>2017 Team Scores</u></b></p> <ol style="list-style-type: none"> <li>1. 49.2 (HOME, 1/21)<br/>(HOME, 1/29)</li> <li>3. 49.125 (AWAY, 2/4)<br/>(HOME, 2/26)</li> <li>5. 49.025 (AWAY, 2/18)</li> <li>6. 48.85 (AWAY, 1/13)<br/>(AWAY, 2/12)</li> <li>8. 48.3 (AWAY, 1/8)</li> </ol> | <ul style="list-style-type: none"> <li>• Kirah Koshinski earned the event win at Maryland (1/8) with a 9.85 score. Zaakira Muhammad placed third with a 9.775 mark.</li> <li>• The Mountaineers totaled 48.85 at Pitt (1/13), including a winning, 9.875 showing from Kirah Koshinski and a third place, 9.825 mark from Zaakira Muhammad.</li> <li>• WVU used four career-high scores and five marks of 9.775 or better to power to a season-best 49.2 showing against No. 1 Oklahoma (1/21). Included in the night was a second place, 9.95 score from Kirah Koshinski; the total matched her career high.</li> <li>• The Mountaineers tallied a season-high 49.2 for the second straight week in wins against No. 7 Denver, Temple and Towson (1/29). Kirah Koshinski tied for first place with a 9.9 mark, while Zaakira Muhammad and Julia Merwin tied for third place with 9.85s, a career best for Merwin.</li> <li>• Kirah Koshinski earned her second straight event win with a 9.9 showing at Kent State (2/4). A trio of Mountaineers - Kassidy Cumber, Zaakira Muhammad and Alexa Goldberg - scored 9.825 and finished in third place. The mark was a career best for Cumber and season high for Goldberg.</li> <li>• Kirah Koshinski paced the lineup and finished third overall with a 9.85 score at Towson with Temple and North Carolina (2/12).</li> <li>• Chloe Cluchey returned to the lineup for the first time since the team's season opener and anchored at No. 19 Ohio State (2/18) with a winning, career-best 9.925 score. Kirah Koshinski finished fourth with a 9.85.</li> <li>• Kirah Koshinski earned her fifth floor title of the season with a 9.9 score against No. 24 Iowa State and Maryland (2/26). Chloe Cluchey and Julia Merwin tied for third place with 9.85s, a career-best matching score for Merwin, and WVU tallied a 49.125 total.</li> </ul> |

### National Rankings - Week 8

| Team                   | RQS     | Average | High    |
|------------------------|---------|---------|---------|
| 1. Oklahoma*           | 197.99  | 197.897 | 198.35  |
| 2. LSU                 | 197.695 | 197.647 | 197.975 |
| 3. Florida*            | 197.495 | 197.519 | 197.975 |
| 4. UCLA                | 197.305 | 197.028 | 198.125 |
| 5. Utah                | 197.18  | 197.094 | 197.875 |
| 6. Alabama             | 197.085 | 196.817 | 197.825 |
| 7. Denver*             | 196.82  | 196.389 | 197.075 |
| 8. Georgia             | 196.82  | 196.389 | 197.075 |
| 9. Oregon State        | 196.638 | 196.3   | 197.125 |
| 10. Boise State        | 196.605 | 196.486 | 197.075 |
| 11. Kentucky           | 196.535 | 196.253 | 197.475 |
| Michigan               | 196.535 | 196.634 | 197.825 |
| 13. Nebraska           | 196.45  | 196.084 | 197.175 |
| 14. Iowa               | 196.15  | 195.558 | 196.55  |
| 15. Missouri           | 196.145 | 196.014 | 196.75  |
| 16. George Washington* | 196.14  | 195.839 | 196.725 |
| 17. Washington         | 196.13  | 196.143 | 197.175 |
| 18. Auburn             | 196.09  | 195.842 | 196.45  |
| 19. California         | 196.0   | 195.966 | 197.075 |
| 20. Illinois           | 195.995 | 195.747 | 196.625 |
| 21. Southern Utah      | 195.915 | 195.875 | 196.725 |
| 22. Utah State         | 195.775 | 195.128 | 196.3   |
| 23. Arizona            | 195.68  | 195.241 | 196.275 |
| 24. Eastern Michigan*  | 195.67  | 195.075 | 196.0   |
| 25. Ohio State*        | 195.595 | 195.647 | 196.45  |

- Based on Road to Nationals Rankings (as of 2/27)

\* - 2017 opponent

The first week of the season, high scores are used. For the first month of the season, average team scores determine the national rankings, then regional qualifying scores (RQS) are used.

### Big 12 Event Rankings

| Team Total              | RQS            | Avg.         | High         |
|-------------------------|----------------|--------------|--------------|
| 1. Oklahoma             | 197.99         | 197.897      | 198.35       |
| 2. Denver               | 196.875        | 196.415      | 197.15       |
| <b>3. West Virginia</b> | <b>195.565</b> | <b>195.3</b> | <b>196.3</b> |
| 4. Iowa State           | 195.55         | 195.147      | 196.125      |

| Vault                   | RQS          | Avg.          | High         |
|-------------------------|--------------|---------------|--------------|
| 1. Oklahoma             | 49.435       | 49.417        | 49.55        |
| 2. Denver               | 49.205       | 49.01         | 49.35        |
| <b>3. West Virginia</b> | <b>49.02</b> | <b>49.006</b> | <b>49.25</b> |
| 4. Iowa State           | 48.825       | 48.761        | 49.1         |

| Uneven Bars             | RQS           | Avg.          | High          |
|-------------------------|---------------|---------------|---------------|
| 1. Oklahoma             | 49.535        | 49.503        | 49.7          |
| 2. Denver               | 49.235        | 49.115        | 49.4          |
| 3. Iowa State           | 48.915        | 48.822        | 49.125        |
| <b>4. West Virginia</b> | <b>48.905</b> | <b>48.744</b> | <b>49.175</b> |

| Balance Beam            | RQS           | Avg.          | High        |
|-------------------------|---------------|---------------|-------------|
| 1. Oklahoma             | 49.52         | 49.456        | 49.625      |
| 2. Denver               | 49.245        | 49.165        | 49.4        |
| 3. Iowa State           | 48.805        | 48.686        | 49.425      |
| <b>4. West Virginia</b> | <b>48.705</b> | <b>48.591</b> | <b>49.1</b> |

| Floor Exercise          | RQS           | Avg.          | High        |
|-------------------------|---------------|---------------|-------------|
| 1. Oklahoma             | 49.6          | 49.522        | 49.675      |
| 2. Denver               | 49.195        | 49.125        | 49.275      |
| <b>3. West Virginia</b> | <b>49.065</b> | <b>48.959</b> | <b>49.2</b> |
| 4. Iowa State           | 48.965        | 48.878        | 49.2        |

### Big 12 Individual Rankings

| All-Around        | RQS    | Avg.   | High   |
|-------------------|--------|--------|--------|
| 1. M. Nichols, OU | 39.785 | 39.789 | 39.925 |
| 2. C. Capps, OU   | 39.57  | 39.494 | 39.7   |
| 3. M. Karr, DU    | 39.435 | 39.31  | 39.675 |

| Vault             | RQS   | Avg.  | High  |
|-------------------|-------|-------|-------|
| 1. M. Nichols, OU | 9.935 | 9.919 | 10.0  |
| 2. B. Dowell, OU  | 9.93  | 9.908 | 9.975 |
| 3. M. Karr, DU    | 9.915 | 9.895 | 10.0  |

| Uneven Bars       | RQS   | Avg.  | High  |
|-------------------|-------|-------|-------|
| 1. M. Nichols, OU | 9.945 | 9.941 | 9.975 |
| 2. M. Wofford, OU | 9.925 | 9.803 | 10.0  |
| 3. N. Lehmann, OU | 9.91  | 9.906 | 10.0  |

| Balance Beam      | RQS   | Avg.  | High  |
|-------------------|-------|-------|-------|
| 1. M. Nichols, OU | 9.955 | 9.947 | 10.0  |
| 2. C. Capps, OU   | 9.945 | 9.875 | 9.975 |
| 3. N. Brown, OU   | 9.895 | 9.758 | 9.925 |

| Floor Exercise      | RQS   | Avg.  | High  |
|---------------------|-------|-------|-------|
| 1. M. Nichols, OU   | 9.965 | 9.964 | 10.0  |
| 2. A.J. Jackson, OU | 9.95  | 9.925 | 9.975 |
| 3. C. Capps, OU     | 9.93  | 9.919 | 9.975 |

Based on Road to Nationals Rankings (as of 2/27)

### WVU in the Rankings

| WVU in the NCAA |       |     |     |    |     |
|-----------------|-------|-----|-----|----|-----|
|                 | Total | V   | UB  | BB | FE  |
| Jan. 9*         | 19    | 10  | T25 | 22 | T30 |
| Jan. 16*        | 28    | T19 | 49  | 24 | 35  |
| Jan. 23*        | 25    | 19  | T43 | 25 | 26  |
| Jan. 30*        | 25    | 16  | 37  | 27 | T20 |
| Feb. 6*         | 24    | 13  | 35  | 26 | 17  |
| Feb. 13*        | 24    | 16  | 30  | 35 | 25  |
| Feb. 20**       | 26    | 17  | T24 | 31 | 18  |
| Feb. 27**       | 26    | 19  | 28  | 34 | 22  |

| WVU in the Southeast Region |       |   |    |    |    |
|-----------------------------|-------|---|----|----|----|
|                             | Total | V | UB | BB | FE |
| Jan. 9*                     | 4     | 2 | 6  | 5  | 6  |
| Jan. 16*                    | 5     | 4 | 7  | 3  | 6  |
| Jan. 23*                    | 5     | 4 | 7  | 4  | 5  |
| Jan. 30*                    | 4     | 3 | 6  | 4  | 4  |
| Feb. 6*                     | 4     | 3 | 6  | 4  | 4  |
| Feb. 13*                    | 4     | 3 | 4  | 6  | 3  |
| Feb. 20**                   | 4     | 3 | T5 | 4  | 4  |
| Feb. 27**                   | 4     | 4 | 4  | 5  | 4  |

| WVU in the Big 12 Conference |       |   |    |    |    |
|------------------------------|-------|---|----|----|----|
|                              | Total | V | UB | BB | FE |
| Jan. 9*                      | 3     | 3 | 4  | 3  | 3  |
| Jan. 16*                     | 3     | 3 | 4  | 3  | 3  |
| Jan. 23*                     | 3     | 3 | 4  | 3  | 3  |
| Jan. 30*                     | 3     | 3 | 4  | 3  | 3  |
| Feb. 6*                      | 3     | 2 | 4  | 4  | 3  |
| Feb. 13*                     | 3     | 2 | 4  | 4  | 3  |
| Feb. 20**                    | 4     | 3 | 3  | 4  | 3  |
| Feb. 27**                    | 3     | 3 | 4  | 4  | 3  |

\* - Rankings based on season average

\*\* - Rankings based on RQS

The Road to an RQS: The Road to Nationals Rankings were determined by team averages throughout the first half of the season. The Feb. 20 poll was the first of the year determined by Regional Qualifying Scores (RQS). RQS determines the top 18 teams that are seeded on a national basis for the NCAA Regional Championships. A team RQS is calculated by taking a squad's six highest scores, three of which must be from road meets, dropping the top score and averaging the remaining five.

WVU's current RQS of 195.565 is based on its results from the following meets:

1. ~~196.3~~, Jan. 29 WVU Coliseum
2. 195.95, Feb. 4, at Kent State
3. 195.95, Feb. 26, WVU Coliseum
4. 195.8, Feb. 18, at Ohio State
5. 195.55, Jan. 21, WVU Coliseum
6. 194.475, Feb. 12, at Towson

### Mountaineer Season Podium Finishes

|                   | 1st | 2nd | 3rd | Total |
|-------------------|-----|-----|-----|-------|
| Kirah Koshinski   | 9   | 5   | 2   | 16    |
| Zaakira Muhammad  | 4   | 4   | 7   | 15    |
| Alexa Goldberg    | 5   |     | 3   | 8     |
| Tiara Wright      | 2   | 3   | 2   | 7     |
| Chloe Cluchey     | 1   | 1   | 1   | 3     |
| Julia Merwin      |     |     | 3   | 3     |
| Robyn Bernard     |     | 1   | 1   | 2     |
| Carly Galpin      | 1   | 1   |     | 2     |
| Abby Kaufman      |     |     | 2   | 2     |
| Kassidy Cumber    |     |     | 1   | 1     |
| Brooklyn Doggette | 1   |     |     | 1     |
| Jordan Gillette   | 1   |     |     | 1     |

### Big 12 Weekly Award Winners

#### Big 12 Gymnast of the Week

Feb. 6.....Kirah Koshinski

## Meet-by-Meet (Placements), Season and Career Statistics



### Robyn Bernard

| Career Statistics |       |    |              |  |
|-------------------|-------|----|--------------|--|
| Year              | Meets | AA | Total Points |  |
| 2017              | 8     | 0  | 204.4        |  |
| 2016              | 13    | 0  | 261.4        |  |
| 2015              | 11    | 0  | 192.75       |  |
| Career            | 32    | 0  | 658.55       |  |

#### Meet-by-Meet in 2017

| Date        | Place          | Vault      | Bars        | Beam | Floor      | A-A |
|-------------|----------------|------------|-------------|------|------------|-----|
| 1/8         | Maryland       | 9.725 (t6) | 9.725 (t5)  | --   | --         | --  |
| 1/13        | Pitt           | 9.2 (t11)  | 9.7 (t6)    | --   | 9.75 (t5)  | --  |
| 1/21        | WVU            | 9.75 (t9)  | 9.75 (t8)   | --   | 9.8 (t10)  | --  |
| 1/29        | WVU            | 9.8 (t8)   | 9.825 (t8)  | --   | 9.825 (6)  | --  |
| 2/4         | Kent State     | 9.85 (2)   | 9.65 (t10)  | --   | --         | --  |
| 2/12        | Towson         | 9.825 (t3) | 9.7 (t14)   | --   | --         | --  |
| 2/18        | Ohio State     | 9.75 (t6)  | 9.725 (t11) | --   | 9.775 (t7) | --  |
| 2/26        | WVU            | 9.825 (t4) | 9.75 (t8)   | --   | 9.7 (t15)  | --  |
| 3/3         | Pitt           |            |             |      |            |     |
| 3/5         | WVU            |            |             |      |            |     |
| 3/10        | Florida        |            |             |      |            |     |
| 3/18        | Big 12         |            |             |      |            |     |
| 4/1         | NCAA Regionals |            |             |      |            |     |
| RQS         |                | 9.79       | 9.73        |      | --         |     |
| Average     |                | 9.716      | 9.728       |      | 9.77       |     |
| Season High |                | 9.85       | 9.825       |      | 9.825      |     |
| Career High |                | 9.875      | 9.825       | 9.5  | 9.825      | --  |

**Notes:** Consistent two-event specialist on vault and bars who added floor to her responsibilities as a junior ... finished fifth on the team in 2016 with 261.4 points and did not drop a score on bars ... made career floor debut at Pitt on 1/13/17 ... owns four career podium finishes (all on vault) ... hit vault career high on 2/14/16 ... hit bars career high on 1/29/17 ... hit beam career high three times in 2015 ... 2016 NACGC/W Scholastic All-America.



### Chloe Cluchey

| Career Statistics |       |    |              |  |
|-------------------|-------|----|--------------|--|
| Year              | Meets | AA | Total Points |  |
| 2017              | 8     | 0  | 145.125      |  |

#### Meet-by-Meet in 2017

| Date        | Place          | Vault       | Bars        | Beam | Floor     | A-A |
|-------------|----------------|-------------|-------------|------|-----------|-----|
| 1/8         | Maryland       | 9.725 (t6)  | 9.775 (t2)  | --   | 9.2 (9)   | --  |
| 1/13        | Pitt           | 9.675 (t5)  | 8.975 (t2)  | --   | --        | --  |
| 1/21        | WVU            | 9.75 (t9)   | 9.675 (t10) | --   | --        | --  |
| 1/29        | WVU            | 9.875 (4)   | 9.75 (t14)  | --   | --        | --  |
| 2/4         | Kent State     | 9.8 (t5)    | --          | --   | --        | --  |
| 2/12        | Towson         | 9.675 (t14) | --          | --   | --        | --  |
| 2/18        | Ohio State     | 9.8 (t4)    | --          | --   | 9.925 (1) | --  |
| 2/26        | WVU            | 9.675 (t16) | --          | --   | 9.85 (t3) | --  |
| 3/3         | Pitt           |             |             |      |           |     |
| 3/5         | WVU            |             |             |      |           |     |
| 3/10        | Florida        |             |             |      |           |     |
| 3/18        | Big 12         |             |             |      |           |     |
| 4/1         | NCAA Regionals |             |             |      |           |     |
| RQS         |                | 9.75        | --          |      | --        |     |
| Average     |                | 9.747       | 9.544       |      | 9.658     |     |
| Season High |                | 9.875       | 9.775       |      | 9.925     |     |
| Career High |                | 9.875       | 9.775       | --   | 9.925     | --  |

**Notes:** Paced the team on bars in career debut at Maryland and earned first career podium finish ... owns one career victory (floor) and three career podium finishes ... six-year level 10 gymnast at Capital Gymnastics ... five-time Junior Olympics National Championships qualifier ... finished sixth on vault and beam at the 2016 JO National Championships.



### Kassidy Cumber

| Career Statistics |       |    |              |  |
|-------------------|-------|----|--------------|--|
| Year              | Meets | AA | Total Points |  |
| 2017              | 8     | 0  | 134.725      |  |

#### Meet-by-Meet in 2017

| Date        | Place          | Vault | Bars        | Beam        | Floor       | A-A |
|-------------|----------------|-------|-------------|-------------|-------------|-----|
| 1/8         | Maryland       | --    | 9.7 (t8)    | 9.75 (t5)   | --          | --  |
| 1/13        | Pitt           | --    | 9.1 (t11)   | 9.175 (t10) | 9.75 (t5)   | --  |
| 1/21        | WVU            | --    | --          | --          | 9.825 (9)   | --  |
| 1/29        | WVU            | --    | --          | --          | 9.725 (t14) | --  |
| 2/4         | Kent State     | --    | 9.725 (8)   | --          | 9.825 (t3)  | --  |
| 2/12        | Towson         | --    | 9.775 (t9)  | --          | 9.8 (t8)    | --  |
| 2/18        | Ohio State     | --    | 9.75 (t6)   | --          | 9.75 (t9)   | --  |
| 2/26        | WVU            | --    | 9.075 (t18) | --          | --          | --  |
| 3/3         | Pitt           |       |             |             |             |     |
| 3/5         | WVU            |       |             |             |             |     |
| 3/10        | Florida        |       |             |             |             |     |
| 3/18        | Big 12         |       |             |             |             |     |
| 4/1         | NCAA Regionals |       |             |             |             |     |
| RQS         |                |       | 9.47        | --          | 9.77        |     |
| Average     |                |       | 9.521       | 9.463       | 9.779       |     |
| Season High |                |       | 9.775       | 9.75        | 9.825       |     |
| Career High |                | --    | 9.775       | 9.75        | 9.825       | --  |

**Notes:** Earned first career podium finish (floor) at Kent State ... four-year level 10 gymnast at Gymstrada Gymnastics School ... two-time Junior Olympics National Championships qualifier ... finished ninth on floor at the 2016 JO National Championships.



### Brooklyn Doggette

| Career Statistics |       |    |              |  |
|-------------------|-------|----|--------------|--|
| Year              | Meets | AA | Total Points |  |
| 2017              | 6     | 0  | 57.4         |  |
| 2015              | 12    | 0  | 211.875      |  |
| Career            | 18    | 0  | 269.275      |  |

#### Meet-by-Meet in 2017

| Date        | Place          | Vault | Bars | Beam       | Floor | A-A |
|-------------|----------------|-------|------|------------|-------|-----|
| 1/8         | Maryland       | --    | --   | 9.775 (4)  | --    | --  |
| 1/13        | Pitt           | --    | --   | 9.45 (9)   | --    | --  |
| 1/21        | WVU            | --    | --   | 9.825 (t4) | --    | --  |
| 1/29        | WVU            | --    | --   | 9.3 (20)   | --    | --  |
| 2/4         | Kent State     | --    | --   | 9.825 (1)  | --    | --  |
| 2/12        | Towson         | --    | --   | 9.225 (20) | --    | --  |
| 2/18        | Ohio State     | --    | --   | --         | --    | --  |
| 2/26        | WVU            | --    | --   | --         | --    | --  |
| 3/3         | Pitt           |       |      |            |       |     |
| 3/5         | WVU            |       |      |            |       |     |
| 3/10        | Florida        |       |      |            |       |     |
| 3/18        | Big 12         |       |      |            |       |     |
| 4/1         | NCAA Regionals |       |      |            |       |     |
| RQS         |                |       |      | 9.515      |       |     |
| Average     |                |       |      | 9.567      |       |     |
| Season High |                |       |      | 9.825      |       |     |
| Career High |                | --    | 9.8  | 9.825      | --    | --  |

**Notes:** Earned first career podium finish with a win on beam at Kent State ... did not see competitive action 2016 ... competed on beam in all 12 meets and on bars in 10 meets in 2015 ... hit bars career high on 3/8/15 ... hit beam career high on 1/21/17 and twice in 2015 ... 2016 NACGC/W Scholastic All-America.

## Meet-by-Meet (Placements), Season and Career Statistics



### Erica Fontaine

| Career Statistics |       |    |              |
|-------------------|-------|----|--------------|
| Year              | Meets | AA | Total Points |
| 2017              | 5     | 0  | 48.875       |
| 2016              | 10    | 0  | 96.55        |
| Career            | 15    | 0  | 145.425      |

#### Meet-by-Meet in 2017

| Date        | Place          | Vault | Bars | Beam | Floor | A-A |
|-------------|----------------|-------|------|------|-------|-----|
| 1/8         | Maryland       | --    | --   | --   | --    | --  |
| 1/13        | Pitt           | --    | --   | --   | --    | --  |
| 1/21        | WVU            | --    | --   | --   | --    | --  |
| 1/29        | WVU            | --    | --   | --   | --    | --  |
| 2/4         | Kent State     | --    | --   | --   | --    | --  |
| 2/12        | Towson         | --    | --   | --   | --    | --  |
| 2/18        | Ohio State     | --    | --   | --   | --    | --  |
| 2/26        | WVU            | --    | --   | --   | --    | --  |
| 3/3         | Pitt           | --    | --   | --   | --    | --  |
| 3/5         | WVU            | --    | --   | --   | --    | --  |
| 3/10        | Florida        | --    | --   | --   | --    | --  |
| 3/18        | Big 12         | --    | --   | --   | --    | --  |
| 4/1         | NCAA Regionals | --    | --   | --   | --    | --  |
| RQS         |                |       |      |      |       |     |
| Average     |                |       |      |      |       |     |
| Season High |                |       |      |      |       |     |
| Career High |                |       |      |      |       |     |

**Notes:** Three-year level 10 gymnast at Hill's Gymnastics ... three-time Junior Olympics National Championships qualifier.



### Carly Galpin

| Career Statistics |       |    |              |
|-------------------|-------|----|--------------|
| Year              | Meets | AA | Total Points |
| 2017              | 5     | 0  | 48.875       |
| 2016              | 10    | 0  | 96.55        |
| Career            | 15    | 0  | 145.425      |

#### Meet-by-Meet in 2017

| Date        | Place          | Vault | Bars | Beam       | Floor | A-A |
|-------------|----------------|-------|------|------------|-------|-----|
| 1/8         | Maryland       | --    | --   | --         | --    | --  |
| 1/13        | Pitt           | --    | --   | 9.825 (t1) | --    | --  |
| 1/21        | WVU            | --    | --   | 9.775 (t7) | --    | --  |
| 1/29        | WVU            | --    | --   | 9.825 (t6) | --    | --  |
| 2/4         | Kent State     | --    | --   | --         | --    | --  |
| 2/12        | Towson         | --    | --   | 9.6 (15)   | --    | --  |
| 2/18        | Ohio State     | --    | --   | 9.85 (2)   | --    | --  |
| 2/26        | WVU            | --    | --   | --         | --    | --  |
| 3/3         | Pitt           | --    | --   | --         | --    | --  |
| 3/5         | WVU            | --    | --   | --         | --    | --  |
| 3/10        | Florida        | --    | --   | --         | --    | --  |
| 3/18        | Big 12         | --    | --   | --         | --    | --  |
| 4/1         | NCAA Regionals | --    | --   | --         | --    | --  |
| RQS         |                |       |      |            |       |     |
| Average     |                |       |      |            |       |     |
| Season High |                |       |      |            |       |     |
| Career High |                |       |      |            |       |     |

**Notes:** Completed in 10 meets in 2016 and did not drop a score in nine balance beam lineup appearances ... owns four career podium finishes (all on balance beam) and two career event wins ... scored career high on beam on 1/24/16 ... 2016 Academic All-Big 12 Rookie Team.



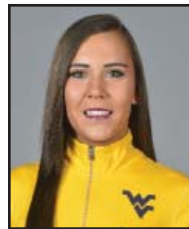
### Jordan Gillette

| Career Statistics |       |    |              |
|-------------------|-------|----|--------------|
| Year              | Meets | AA | Total Points |
| 2017              | 7     | 0  | 154.475      |
| 2016              | 13    | 0  | 259.75       |
| 2015              | 10    | 0  | 156.025      |
| Career            | 30    | 0  | 570.25       |

#### Meet-by-Meet in 2017

| Date        | Place          | Vault | Bars        | Beam      | Floor      | A-A |
|-------------|----------------|-------|-------------|-----------|------------|-----|
| 1/8         | Maryland       | --    | 9.5 (11)    | 9.9 (1)   | 9.0 (t10)  | --  |
| 1/13        | Pitt           | --    | --          | --        | --         | --  |
| 1/21        | WVU            | --    | 9.775 (t6)  | 9.725 (9) | --         | --  |
| 1/29        | WVU            | --    | 9.725 (t16) | 9.85 (t4) | 9.775 (t7) | --  |
| 2/4         | Kent State     | --    | 9.675 (9)   | 9.25 (12) | --         | --  |
| 2/12        | Towson         | --    | 9.7 (t14)   | --        | --         | --  |
| 2/18        | Ohio State     | --    | 9.75 (t6)   | 9.75 (t6) | 9.725 (11) | --  |
| 2/26        | WVU            | --    | 9.575 (16)  | 9.8 (t6)  | --         | --  |
| 3/3         | Pitt           | --    | --          | --        | --         | --  |
| 3/5         | WVU            | --    | --          | --        | --         | --  |
| 3/10        | Florida        | --    | --          | --        | --         | --  |
| 3/18        | Big 12         | --    | --          | --        | --         | --  |
| 4/1         | NCAA Regionals | --    | --          | --        | --         | --  |
| RQS         |                |       |             |           |            |     |
| Average     |                |       |             |           |            |     |
| Season High |                |       |             |           |            |     |
| Career High |                |       |             |           |            |     |

**Notes:** Completed in all 13 meets in 2016 as a two-event specialist and saw time on floor in 12 competitions ... finished sixth on the team as a sophomore with 259.75 points ... owns three career victories, all on beam, and six podium finishes ... paced the team on beam as a freshman in 2015 with a 9.763 season average ... hit beam career high on 1/8/17 ... hit floor career high on 3/6/16 ... hit bars career high in event debut on 2/7/16 and again on 1/21/17.



### Alexa Goldberg

| Career Statistics |       |    |              |
|-------------------|-------|----|--------------|
| Year              | Meets | AA | Total Points |
| 2017              | 8     | 3  | 260.975      |
| 2016              | 13    | 9  | 447.9        |
| 2015              | 11    | 2  | 321.7        |
| 2014              | 12    | 0  | 223.35       |
| Career            | 44    | 14 | 1,253.925    |

#### Meet-by-Meet in 2017

| Date        | Place          | Vault       | Bars       | Beam       | Floor       | A-A        |
|-------------|----------------|-------------|------------|------------|-------------|------------|
| 1/8         | Maryland       | 9.6 (12)    | --         | 9.45 (11)  | 9.725 (6)   | --         |
| 1/13        | Pitt           | 9.65 (8)    | --         | 9.75 (4)   | 9.0 (12)    | --         |
| 1/21        | WVU            | 9.675 (12)  | 9.775 (t6) | 9.675 (10) | 8.9 (12)    | 38.025 (3) |
| 1/29        | WVU            | 9.725 (t13) | 9.875 (t1) | 9.475 (18) | --          | --         |
| 2/4         | Kent State     | 9.775 (t7)  | 9.875 (1)  | 9.675 (t8) | 9.825 (t3)  | 39.15 (1)  |
| 2/12        | Towson         | 9.75 (12)   | 9.875 (t1) | 9.7 (13)   | 9.725 (t15) | 39.05 (4)  |
| 2/18        | Ohio State     | 9.7 (12)    | 9.825 (t3) | 9.75 (t6)  | --          | --         |
| 2/26        | WVU            | 9.675 (t16) | 9.85 (1)   | 9.7 (t15)  | --          | --         |
| 3/3         | Pitt           | --          | --         | --         | --          | --         |
| 3/5         | WVU            | --          | --         | --         | --          | --         |
| 3/10        | Florida        | --          | --         | --         | --          | --         |
| 3/18        | Big 12         | --          | --         | --         | --          | --         |
| 4/1         | NCAA Regionals | --          | --         | --         | --          | --         |
| RQS         |                |             |            |            |             |            |
| Average     |                |             |            |            |             |            |
| Season High |                |             |            |            |             |            |
| Career High |                |             |            |            |             |            |

**Notes:** Ranks No. 3 in program history with eight career bars scores of 9.9 or better ... owns a team-best 27 career victories, 21 on bars, and 49 career podium finishes ... competed in all 13 meets in 2016, nine as an all-arounder, and scored 39.0 or better six times ... also earned a team-best 447.9 points ... ranked No. 44 nationally on bars in 2016 with a 9.87 RQS ... scored a career-high 9.95 on bars on 3/8/15 and on floor on 1/17/16 ... set beam career high on 4/4/15 and vault career high on 2/4/17 ... tallied all-around career high on 3/6/16 ... one career Big 12 Gymnast of the Week honor.



## Meet-by-Meet (Placements), Season and Career Statistics



### Abby Kaufman

| Career Statistics |       |    |              |
|-------------------|-------|----|--------------|
| Year              | Meets | AA | Total Points |
| 2017              | 6     | 0  | 66.675       |

#### Meet-by-Meet in 2017

| Date        | Place          | Vault | Bars       | Beam        | Floor       | A-A |
|-------------|----------------|-------|------------|-------------|-------------|-----|
| 1/8         | Maryland       | --    | --         | 9.25 (12)   | --          | --  |
| 1/13        | Pitt           | --    | 9.525 (10) | --          | --          | --  |
| 1/21        | WVU            | --    | --         | --          | --          | --  |
| 1/29        | WVU            | --    | --         | --          | --          | --  |
| 2/4         | Kent State     | --    | --         | 9.775 (t3)  | --          | --  |
| 2/12        | Towson         | --    | --         | 8.95 (22)   | 9.675 (t18) | --  |
| 2/18        | Ohio State     | --    | --         | 9.775 (t3)  | --          | --  |
| 2/26        | WVU            | --    | --         | 9.725 (t13) | --          | --  |
| 3/3         | Pitt           |       |            |             |             |     |
| 3/5         | WVU            |       |            |             |             |     |
| 3/10        | Florida        |       |            |             |             |     |
| 3/18        | Big 12         |       |            |             |             |     |
| 4/1         | NCAA Regionals |       |            |             |             |     |
| RQS         |                | --    | --         | --          |             |     |
| Average     |                |       | 9.525      | 9.495       | 9.675       |     |
| Season High |                |       | 9.525      | 9.775       | 9.675       |     |
| Career High |                | --    | 9.525      | 9.775       | 9.675       | --  |

**Notes:** Earned first career podium finish (beam) at Kent State ... owns two career podium finishes, both on beam ... five-year level 10 gymnast at Prestige Gymnastics ... two-time Junior Olympics National Championships qualifier ... placed seventh on floor and eighth in the all-around at the 2016 JO National Championships.



### Kirak Koskinski

| Career Statistics |       |    |              |
|-------------------|-------|----|--------------|
| Year              | Meets | AA | Total Points |
| 2017              | 8     | 0  | 235.95       |
| 2016              | 13    | 0  | 343.875      |
| Career            | 21    | 0  | 579.825      |

#### Meet-by-Meet in 2017

| Date        | Place          | Vault      | Bars | Beam       | Floor      | A-A |
|-------------|----------------|------------|------|------------|------------|-----|
| 1/8         | Maryland       | 9.925 (1)  | --   | 9.8 (t2)   | 9.85 (1)   | --  |
| 1/13        | Pitt           | 9.85 (t1)  | --   | 9.675 (6)  | 9.875 (t1) | --  |
| 1/21        | WVU            | 9.85 (t5)  | --   | 9.6 (t11)  | 9.95 (t2)  | --  |
| 1/29        | WVU            | 9.9 (t2)   | --   | 9.8 (t8)   | 9.9 (t1)   | --  |
| 2/4         | Kent State     | 9.9 (1)    | --   | 9.8 (2)    | 9.9 (1)    | --  |
| 2/12        | Towson         | 9.825 (t3) | --   | 9.75 (t10) | 9.85 (t3)  | --  |
| 2/18        | Ohio State     | 9.9 (t1)   | --   | 9.7 (t10)  | 9.85 (t4)  | --  |
| 2/26        | WVU            | 9.75 (t9)  | --   | 9.85 (t2)  | 9.9 (1)    | --  |
| 3/3         | Pitt           |            |      |            |            |     |
| 3/5         | WVU            |            |      |            |            |     |
| 3/10        | Florida        |            |      |            |            |     |
| 3/18        | Big 12         |            |      |            |            |     |
| 4/1         | NCAA Regionals |            |      |            |            |     |
| RQS         |                | 9.88       |      | 9.77       | 9.885      |     |
| Average     |                | 9.862      |      | 9.747      | 9.884      |     |
| Season High |                | 9.925      |      | 9.85       | 9.95       |     |
| Career High |                | 9.925      | --   | 9.85       | 9.95       | --  |

**Notes:** 2016 NACGC/W Regular Season All-America Vault Second Team, Big 12 Newcomer of the Year and All-Big 12 Gymnastics Vault Team ... owns six career Big 12 weekly honors, including first career Big 12 Gymnast of the Week accolade on 2/6/17 ... finished third on team in 2016 with 343.875 points ... ranked No. 12 nationally on vault in 2016 with 9.9 RQS ... owns 18 career event wins (10 on vault, eight on floor) and 36 podium finishes ... has never dropped a score on any event ... owns nine career vault scores of 9.9 or better, the fifth-best total in program history ... has hit vault career high three times and floor career high twice ... set beam career high on 2/26/17.



### Julia Merwin

| Career Statistics |       |    |              |
|-------------------|-------|----|--------------|
| Year              | Meets | AA | Total Points |
| 2017              | 8     | 0  | 145.725      |

#### Meet-by-Meet in 2017

| Date        | Place          | Vault      | Bars | Beam | Floor      | A-A |
|-------------|----------------|------------|------|------|------------|-----|
| 1/8         | Maryland       | 9.75 (t3)  | --   | --   | 9.75 (t4)  | --  |
| 1/13        | Pitt           | 9.775 (4)  | --   | --   | 9.65 (9)   | --  |
| 1/21        | WVU            | 9.75 (t9)  | --   | --   | 9.775 (11) | --  |
| 1/29        | WVU            | 9.775 (10) | --   | --   | 9.85 (t3)  | --  |
| 2/4         | Kent State     | 9.75 (9)   | --   | --   | 9.75 (9)   | --  |
| 2/12        | Towson         | 9.725 (13) | --   | --   | 9.05 (23)  | --  |
| 2/18        | Ohio State     | 9.75 (t6)  | --   | --   | --         | --  |
| 2/26        | WVU            | 9.775 (t7) | --   | --   | 9.85 (t3)  | --  |
| 3/3         | Pitt           |            |      |      |            |     |
| 3/5         | WVU            |            |      |      |            |     |
| 3/10        | Florida        |            |      |      |            |     |
| 3/18        | Big 12         |            |      |      |            |     |
| 4/1         | NCAA Regionals |            |      |      |            |     |
| RQS         |                | 9.76       |      |      | 9.755      |     |
| Average     |                | 9.756      |      |      | 9.668      |     |
| Season High |                | 9.775      |      |      | 9.85       |     |
| Career High |                | 9.775      | --   | --   | 9.85       | --  |

**Notes:** Owns three career podium finishes (one on vault, two on floor) ... four-year level 10 gymnast at Fredrick Gymnastics Club, the same training center as sophomore Carly Galpin ... 2016 Junior Olympics National Championships qualifier.



### Zaaqira Muhammad

| Career Statistics |       |    |              |
|-------------------|-------|----|--------------|
| Year              | Meets | AA | Total Points |
| 2017              | 8     | 1  | 244.05       |
| 2016              | 13    | 4  | 421.35       |
| 2015              | 12    | 0  | 243.175      |
| Career            | 33    | 5  | 908.575      |

#### Meet-by-Meet in 2017

| Date        | Place          | Vault      | Bars       | Beam      | Floor      | A-A      |
|-------------|----------------|------------|------------|-----------|------------|----------|
| 1/8         | Maryland       | 9.85 (2)   | 8.9 (12)   | --        | 9.775 (3)  | --       |
| 1/13        | Pitt           | 9.85 (t1)  | 9.675 (9)  | --        | 9.825 (t3) | --       |
| 1/21        | WVU            | 9.85 (t5)  | 9.3 (12)   | --        | 9.85 (t7)  | --       |
| 1/29        | WVU            | 9.9 (t2)   | 9.85 (t5)  | --        | 9.85 (t3)  | --       |
| 2/4         | Kent State     | 9.825 (t3) | 9.8 (t4)   | --        | 9.825 (t3) | --       |
| 2/12        | Towson         | 9.85 (t1)  | 9.85 (3)   | --        | 9.8 (t8)   | --       |
| 2/18        | Ohio State     | 9.85 (3)   | 9.75 (t6)  | --        | 9.625 (12) | --       |
| 2/26        | WVU            | 9.875 (2)  | 9.825 (t2) | 9.875 (1) | 9.825 (t5) | 39.4 (1) |
| 3/3         | Pitt           |            |            |           |            |          |
| 3/5         | WVU            |            |            |           |            |          |
| 3/10        | Florida        |            |            |           |            |          |
| 3/18        | Big 12         |            |            |           |            |          |
| 4/1         | NCAA Regionals |            |            |           |            |          |
| RQS         |                | 9.855      | 9.78       | --        | 9.825      | --       |
| Average     |                | 9.856      | 9.619      | 9.875     | 9.797      | 39.4     |
| Season High |                | 9.9        | 9.85       | 9.875     | 9.85       | 39.4     |
| Career High |                | 9.9        | 9.9        | 9.875     | 9.95       | 39.4     |

**Notes:** 2016 Linda Burdette-Good Award honoree as team's Most Valuable Gymnast ... finished second on team in 2016 with 421.35 points ... shows 13 career event wins, including eight on vault, and 50 podium finishes ... hit vault career high twice in 2016 and again on 1/29/17 ... hit career high on bars on 3/8/15 ... set career high on floor on 1/24/16 ... tallied beam and all-around career highs on 2/26/17 ... 2016 Academic All-Big 12 Gymnastics Second Team.

## Meet-by-Meet (Placements), Season and Career Statistics



### Kelsey Sorrenson

| Career Statistics |       |    |              |
|-------------------|-------|----|--------------|
| Year              | Meets | AA | Total Points |
| 2016              | 13    | 0  | 241.425      |

#### Meet-by-Meet in 2017

| Date        | Place          | Vault | Bars | Beam | Floor | A-A |
|-------------|----------------|-------|------|------|-------|-----|
| 1/8         | Maryland       | --    | --   | --   | --    | --  |
| 1/13        | Pitt           | --    | --   | --   | --    | --  |
| 1/21        | WVU            | --    | --   | --   | --    | --  |
| 1/29        | WVU            | --    | --   | --   | --    | --  |
| 2/4         | Kent State     | --    | --   | --   | --    | --  |
| 2/12        | Towson         | --    | --   | --   | --    | --  |
| 2/18        | Ohio State     | --    | --   | --   | --    | --  |
| 2/26        | WVU            | --    | --   | --   | --    | --  |
| 3/3         | Pitt           | --    | --   | --   | --    | --  |
| 3/5         | WVU            | --    | --   | --   | --    | --  |
| 3/10        | Florida        | --    | --   | --   | --    | --  |
| 3/18        | Big 12         | --    | --   | --   | --    | --  |
| 4/1         | NCAA Regionals | --    | --   | --   | --    | --  |
| RQS         |                |       |      |      |       |     |
| Average     |                |       |      |      |       |     |
| Season High |                |       |      |      |       |     |
| Career High |                |       |      |      |       |     |

**Notes:** Big 12 Commissioner's Honor Roll and WVU Garrett Ford Academic Honor Roll honoree.



### Jaquie Tun

| Career Statistics |       |    |              |
|-------------------|-------|----|--------------|
| Year              | Meets | AA | Total Points |
| 2016              | 13    | 0  | 241.425      |

#### Meet-by-Meet in 2017

| Date        | Place          | Vault | Bars | Beam | Floor | A-A |
|-------------|----------------|-------|------|------|-------|-----|
| 1/8         | Maryland       | --    | --   | --   | --    | --  |
| 1/13        | Pitt           | --    | --   | --   | --    | --  |
| 1/21        | WVU            | --    | --   | --   | --    | --  |
| 1/29        | WVU            | --    | --   | --   | --    | --  |
| 2/4         | Kent State     | --    | --   | --   | --    | --  |
| 2/12        | Towson         | --    | --   | --   | --    | --  |
| 2/18        | Ohio State     | --    | --   | --   | --    | --  |
| 2/26        | WVU            | --    | --   | --   | --    | --  |
| 3/3         | Pitt           | --    | --   | --   | --    | --  |
| 3/5         | WVU            | --    | --   | --   | --    | --  |
| 3/10        | Florida        | --    | --   | --   | --    | --  |
| 3/18        | Big 12         | --    | --   | --   | --    | --  |
| 4/1         | NCAA Regionals | --    | --   | --   | --    | --  |
| RQS         |                |       |      |      |       |     |
| Average     |                |       |      |      |       |     |
| Season High |                |       |      |      |       |     |
| Career High |                |       |      |      |       |     |

**Notes:** Dropped only one bars score in 13 appearances in 2016 ... owns one career podium finish ... set vault career high on 1/17/16 ... hit bars career high on 2/26/16 ... tallied floor career high on 3/13/16 ... 2016 NACGC/W Scholastic All-American and Academic All-Big 12 Rookie Team honoree.



### Tiara Wright

| Career Statistics |       |    |              |
|-------------------|-------|----|--------------|
| Year              | Meets | AA | Total Points |
| 2017              | 8     | 0  | 163.225      |
| 2016              | 13    | 0  | 271.95       |
| Career            | 21    | 0  | 435.175      |

#### Meet-by-Meet in 2017

| Date        | Place          | Vault | Bars       | Beam        | Floor    | A-A |
|-------------|----------------|-------|------------|-------------|----------|-----|
| 1/8         | Maryland       | --    | 9.75 (4)   | --          | --       | --  |
| 1/13        | Pitt           | --    | 9.8 (3)    | 9.725 (5)   | --       | --  |
| 1/21        | WVU            | --    | 9.825 (4)  | 9.6 (t11)   | --       | --  |
| 1/29        | WVU            | --    | 9.875 (t1) | 9.725 (t13) | --       | --  |
| 2/4         | Kent State     | --    | 9.85 (2)   | 9.675 (t8)  | 9.0 (12) | --  |
| 2/12        | Towson         | --    | 9.875 (t1) | 9.4 (19)    | --       | --  |
| 2/18        | Ohio State     | --    | 9.825 (t3) | 9.625 (12)  | --       | --  |
| 2/26        | WVU            | --    | 9.825 (t2) | 9.85 (t2)   | 8.0 (16) | --  |
| 3/3         | Pitt           | --    | --         | --          | --       | --  |
| 3/5         | WVU            | --    | --         | --          | --       | --  |
| 3/10        | Florida        | --    | --         | --          | --       | --  |
| 3/18        | Big 12         | --    | --         | --          | --       | --  |
| 4/1         | NCAA Regionals | --    | --         | --          | --       | --  |
| RQS         |                |       |            |             |          |     |
| Average     |                |       |            |             |          |     |
| Season High |                |       |            |             |          |     |
| Career High |                |       |            |             |          |     |

**Notes:** Owns five career wins, four on bars and one on beam, and 13 career podium finishes ... scored a career-high 9.8 on floor in three of the last four meets of the 2016 season ... hit floor career high three times and bars career high twice in 2016 ... set beam career high on 3/13/16 and matched the mark on 2/26/17 ... 2016 Academic All-Big 12 Rookie Team.

## Mountaineers At A Glance

### Gymnastics Coaching Staff

**Head Coach:** Jason Butts (Georgia, '06)

**Record at WVU:** 73-47-1 (Six Years)

**Career Record:** 73-47-1 (Six Years)

**Associate Head Coach:** Travis Doak (Ninth Season)

**Assistant Coach:** Kaylyn Millick (Third Season)

### Gymnastics History

**All-Time Gymnastics Record (Years):** 722-311-5 (45 Years)

**Appearances at Nationals (Last):** Four (2000)

**Appearances at Regionals (Last):** 37 (2016)

**Region:** NCAA Southeast

**Conference:** Big 12

**2017 Record:** 8-5 (2-1)

**2016 Record:** 11-8 (1-5)

**Colors:** Old Gold and Blue

**Nickname:** Mountaineers

**Facility (capacity):** WVU Coliseum (14,000)

### University Information

**Location:** Morgantown, W.Va.

**Enrollment:** 31,514

**Founded:** 1867

**President:** E. Gordon Gee

**Director of Athletics:** Shane Lyons

**Athletics Website:** WVUsports.com

**2017 Vault Lineup Meet-by-Meet**

| Meet                       | 1                        | 2                           | 3                        | 4                          | 5                        | 6                 |
|----------------------------|--------------------------|-----------------------------|--------------------------|----------------------------|--------------------------|-------------------|
| @UMD (48.975)              | Bernard (9.725)          | Goldberg (9.6)              | Merwin (9.75)            | Cluchey (9.725)            | <b>Koshinski (9.925)</b> | Muhammad (9.85)   |
| @Pitt (48.8)               | <del>Bernard (9.2)</del> | Goldberg (9.65)             | <b>Merwin (9.775)</b>    | Cluchey (9.675)            | Muhammad (9.85)          | Koshinski (9.85)  |
| OU (48.95)                 | Bernard (9.75)           | <del>Goldberg (9.675)</del> | Merwin (9.75)            | Cluchey (9.75)             | Muhammad (9.85)          | Koshinski (9.85)  |
| DU, Temple, Towson (49.25) | Bernard (9.8)            | <del>Goldberg (9.725)</del> | <b>Merwin (9.775)</b>    | <b>Cluchey (9.875)</b>     | <b>Muhammad (9.9)</b>    | Koshinski (9.9)   |
| @KSU (49.15)               | <b>Bernard (9.85)</b>    | <b>Goldberg (9.775)</b>     | <del>Merwin (9.75)</del> | Cluchey (9.8)              | Muhammad (9.825)         | Koshinski (9.9)   |
| @TU (48.975)               | Bernard (9.825)          | Goldberg (9.75)             | Merwin (9.725)           | <del>Cluchey (9.675)</del> | Muhammad (9.85)          | Koshinski (9.825) |
| @OSU (49.05)               | Bernard (9.75)           | <del>Goldberg (9.7)</del>   | Merwin (9.75)            | Cluchey (9.8)              | Muhammad (9.85)          | Koshinski (9.9)   |
| ISU, UMD (48.9)            | Bernard (9.825)          | <del>Goldberg (9.675)</del> | Merwin (9.775)           | Cluchey (9.675)            | Koshinski (9.75)         | Muhammad (9.875)  |
| @Pitt                      |                          |                             |                          |                            |                          |                   |
| Pitt, GW, EMU              |                          |                             |                          |                            |                          |                   |
| @UF                        |                          |                             |                          |                            |                          |                   |
| @Big 12                    |                          |                             |                          |                            |                          |                   |
| NCAA Regionals             |                          |                             |                          |                            |                          |                   |

**2017 Uneven Bars Lineup Meet-by-Meet**

| Meet                        | 1                          | 2                          | 3                         | 4                         | 5                       | 6                         |
|-----------------------------|----------------------------|----------------------------|---------------------------|---------------------------|-------------------------|---------------------------|
| @UMD (48.45)                | Bernard (9.725)            | Wright (9.75)              | Cumber (9.7)              | <b>Cluchey (9.775)</b>    | Gillette (9.5)          | Muhammad (8.9)            |
| @Pitt (47.8)                | Bernard (9.7)              | <del>Cluchey (8.975)</del> | Wright (9.8)              | Cumber (9.1)              | Muhammad (9.675)        | <b>Kaufman (9.525)</b>    |
| OU (48.8)                   | Bernard (9.75)             | Wright (9.825)             | <b>Gillette (9.775)</b>   | <del>Muhammad (9.3)</del> | Goldberg (9.775)        | Cluchey (9.675)           |
| DU, Temple, Towson (49.175) | <b>Bernard (9.825)</b>     | <b>Wright (9.875)</b>      | Gillette (9.725)          | <b>Muhammad (9.85)</b>    | <b>Goldberg (9.875)</b> | <del>Cluchey (9.75)</del> |
| @KSU (48.925)               | <del>Bernard (9.65)</del>  | Gillette (9.675)           | Muhammad (9.8)            | <b>Goldberg (9.875)</b>   | Cumber (9.725)          | Wright (9.85)             |
| @TU (49.075)                | Bernard (9.7)              | <del>Gillette (9.7)</del>  | <b>Muhammad (9.85)</b>    | <b>Goldberg (9.875)</b>   | <b>Cumber (9.775)</b>   | <b>Wright (9.875)</b>     |
| @OSU (48.9)                 | <del>Bernard (9.725)</del> | Gillette (9.75)            | Muhammad (9.75)           | Goldberg (9.825)          | Cumber (9.75)           | Wright (9.825)            |
| ISU, UMD (48.825)           | Bernard (9.75)             | Muhammad (9.825)           | <del>Cumber (9.075)</del> | Goldberg (9.85)           | Gillette (9.575)        | Wright (9.825)            |
| @Pitt                       |                            |                            |                           |                           |                         |                           |
| Pitt, GW, EMU               |                            |                            |                           |                           |                         |                           |
| @UF                         |                            |                            |                           |                           |                         |                           |
| @Big 12                     |                            |                            |                           |                           |                         |                           |
| NCAA Regionals              |                            |                            |                           |                           |                         |                           |

**2017 Balance Beam Lineup Meet-by-Meet**

| Meet                        | 1                         | 2                 | 3                         | 4                          | 5                       | 6                         |
|-----------------------------|---------------------------|-------------------|---------------------------|----------------------------|-------------------------|---------------------------|
| @UMD (48.675)               | <del>Kaufman (9.25)</del> | Goldberg (9.45)   | <b>Cumber (9.75)</b>      | Koshinski (9.8)            | <b>Gillette (9.9)</b>   | Doggette (9.775)          |
| @Pitt (48.425)              | <b>Goldberg (9.75)</b>    | Koshinski (9.675) | <del>Cumber (9.175)</del> | Wright (9.725)             | Galpin (9.825)          | Doggette (9.45)           |
| OU (48.6)                   | Goldberg (9.675)          | Koshinski (9.6)   | <del>Wright (9.6)</del>   | Galpin (9.775)             | <b>Doggette (9.825)</b> | Gillette (9.725)          |
| DU, Temple, Towson (48.675) | Goldberg (9.475)          | Koshinski (9.8)   | Gillette (9.85)           | Wright (9.725)             | Galpin (9.825)          | <del>Doggette (9.3)</del> |
| @KSU (48.75)                | Goldberg (9.675)          | Koshinski (9.8)   | <b>Kaufman (9.775)</b>    | <del>Gillette (9.25)</del> | Wright (9.675)          | <b>Doggette (9.825)</b>   |
| @TU (47.675)                | Goldberg (9.7)            | Koshinski (9.75)  | <del>Kaufman (8.95)</del> | Galpin (9.6)               | Wright (9.4)            | Doggette (9.225)          |
| @OSU (48.825)               | <b>Goldberg (9.75)</b>    | Koshinski (9.7)   | Gillette (9.75)           | <del>Wright (9.625)</del>  | <b>Kaufman (9.775)</b>  | <b>Galpin (9.85)</b>      |
| <b>ISU, UMD (49.1)</b>      | <del>Goldberg (9.7)</del> | Gillette (9.8)    | <b>Koshinski (9.85)</b>   | Kaufman (9.725)            | <b>Wright (9.85)</b>    | <b>Muhammad (9.875)</b>   |
| @Pitt                       |                           |                   |                           |                            |                         |                           |
| Pitt, GW, EMU               |                           |                   |                           |                            |                         |                           |
| @UF                         |                           |                   |                           |                            |                         |                           |
| @Big 12                     |                           |                   |                           |                            |                         |                           |
| NCAA Regionals              |                           |                   |                           |                            |                         |                           |

**2017 Floor Exercise Lineup Meet-by-Meet**

| Meet                      | 1                         | 2                       | 3                           | 4                         | 5                       | 6                       |
|---------------------------|---------------------------|-------------------------|-----------------------------|---------------------------|-------------------------|-------------------------|
| @UMD (48.3)               | <del>Gillette (9.0)</del> | Merwin (9.75)           | Cluchey (9.2)               | Goldberg (9.725)          | Muhammad (9.775)        | Koshinski (9.85)        |
| @Pitt (48.85)             | Merwin (9.65)             | Bernard (9.75)          | Cumber (9.75)               | <del>Goldberg (9.0)</del> | Muhammad (9.825)        | Koshinski (9.875)       |
| <b>OU (49.2)</b>          | Merwin (9.775)            | Bernard (9.8)           | <b>Cumber (9.825)</b>       | <del>Goldberg (8.9)</del> | <b>Muhammad (9.85)</b>  | <b>Koshinski (9.95)</b> |
| DU, Temple, Towson (49.2) | <b>Merwin (9.85)</b>      | <b>Bernard (9.825)</b>  | <del>Cumber (9.725)</del>   | <b>Gillette (9.775)</b>   | <b>Muhammad (9.85)</b>  | Koshinski (9.9)         |
| @KSU (49.125)             | Merwin (9.75)             | <del>Wright (9.0)</del> | <b>Cumber (9.825)</b>       | Muhammad (9.825)          | <b>Goldberg (9.825)</b> | Koshinski (9.9)         |
| @TU (48.85)               | <del>Merwin (9.05)</del>  | Cumber (9.8)            | Muhammad (9.8)              | Goldberg (9.725)          | Koshinski (9.85)        | <b>Kaufman (9.675)</b>  |
| @OSU (49.025)             | Gillette (9.725)          | Cumber (9.75)           | <del>Muhammad (9.625)</del> | Bernard (9.775)           | Koshinski (9.85)        | <b>Cluchey (9.925)</b>  |
| ISU, UMD (49.125)         | <b>Merwin (9.85)</b>      | Bernard (9.7)           | <del>Wright (8.0)</del>     | Muhammad (9.825)          | Cluchey (9.85)          | Koshinski (9.9)         |
| @Pitt                     |                           |                         |                             |                           |                         |                         |
| Pitt, GW, EMU             |                           |                         |                             |                           |                         |                         |
| @UF                       |                           |                         |                             |                           |                         |                         |
| @Big 12                   |                           |                         |                             |                           |                         |                         |
| NCAA Regionals            |                           |                         |                             |                           |                         |                         |

**BOLD** - Season High  
Dropped Score